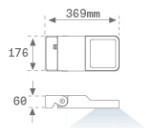
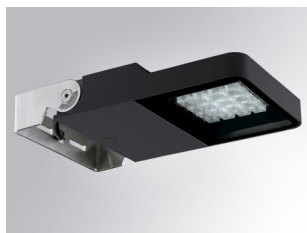


## FLUT 180

MF235ST830NA



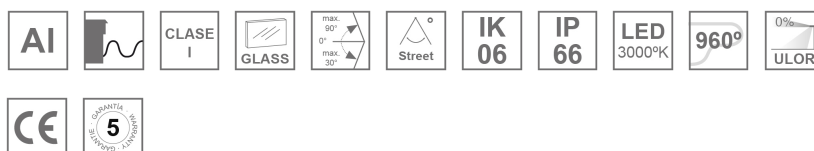
## FLUT 180 G2 3500 8WW STREET ANT.

**Description:**

Surface mounting outdoor luminaire model FLUT 180 G2 STREET, LAMP brand. Manufactured in aluminium injection body lacquered and serigraphed tempered glass. Made of AISI304 inox steel bended axle. Body's low height of 60mm. Model for HI-POWER LED, 3000K colour, CRI 80 and control gear included. With street optics. IP66, IK06 protection rating. Insulation class I. Its axle allows swivels between 90° and -30°. Lifetime: 50.000 L90. BUG Rate: B1 U1 G1, ULOR 0%. Available finishes: anthracite and texturized grey.

**Finish:** Textured anthracite**Weight:** 4.104 g**Maximum surface exposed to wind:** 0.04 M2**Installation:** Surface**TECHNICAL SPECIFICATIONS:**

<b>Light output:</b>	2.672 lm	<b>°K :</b>	3000
<b>Plum:</b>	25,7W	<b>CRI :</b>	80
<b>Efficacy:</b>	104 lm/w	<b>MacAdam:</b>	4
<b>Type:</b>	HIGH POWER LED	<b>Power Supply:</b>	220-240V 50/60Hz
<b>LED Lifetime:</b>	50.000 L90 B10 (Ta=25°C)	<b>Gear:</b>	Electronic
<b>Power:</b>	23W		

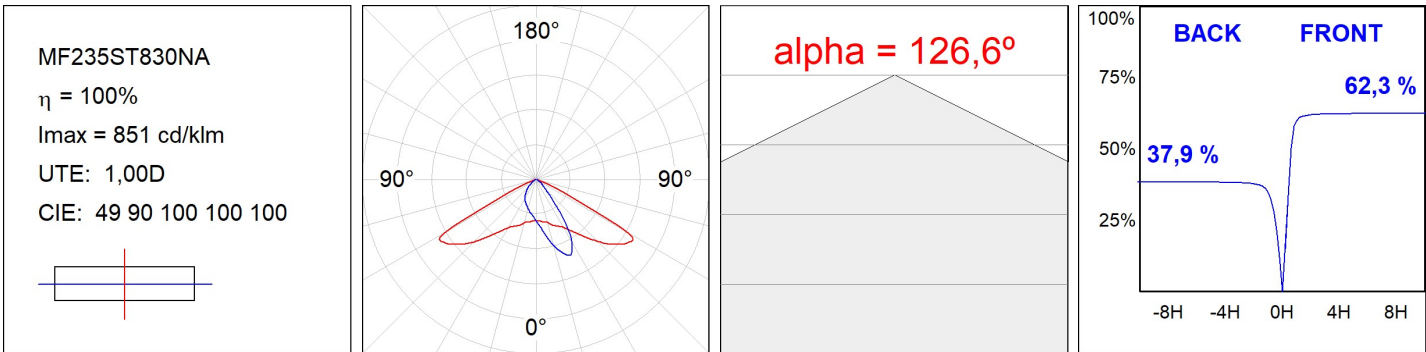
**Light output tolerance +/- 10%****CUSTOM MADE OPTIONS:**

FLUT 180

MF235ST830NA

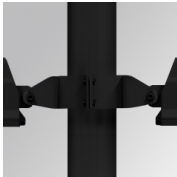
FLUT 180 G2 3500 8WW STREET ANT.

PHOTOMETRIC DATA :



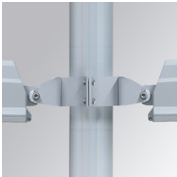
ACCESORIES :

Support



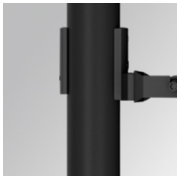
**Product code:**  
COARDB120A  
COARIN120A

**Description:**  
ACC. CO ARM DB 120-130 ANT.  
ACC. CO ARM IND 120-130 ANT.



**Product code:**  
COARDB120G  
COARIN120G

**Description:**  
ACC. CO ARM DB 120-130 GR.  
ACC. CO ARM IND 120-130 GR.



**Product code:**  
COARIN060A

**Description:**  
ACC. CO ARM IND 60-135 ANT.



**Product code:**  
COARIN060G

**Description:**  
ACC. CO ARM IND 60-135 GR.

ACCESORIES :

Optical



**Product code:**  
MFLOSTB

**Description:**  
FLUT 180 ACC. STREET ANTIGLARE LOUVRES