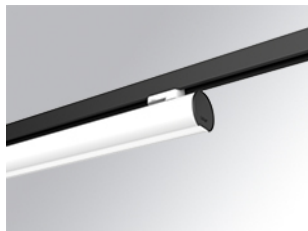


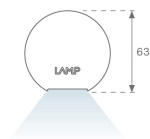
## LAMP TUB 60 SURFACE TRACK

L61TK084MOOC9TWDW

- LTUB60 TRACK 220 840 2400 TW COMF DA WH

**Description:**

Lamptub 60 model from LAMP to be installed on a surface-mounted rail. Made of recycled aluminium extrusion with circular section of 60mm and length of 840mm, an opal comfort diffuser made of a translucent polycarbonate diffuser and an optical film to achieve a controlled light distribution and low UGR<19. Model for MID-POWER LED, with TW colour temperature with CRI90. Built-in electronic DALI control gear. With IP20, IK07 degree of protection. Insulation class II. Group 0 photobiological safety. Lifetime: 50.000h L90 B10. Compatible with Lamp Nomadic system. Available finishes: White (RAL 9010), Black (RAL 9011), Wellbeing and BeSocial palette.

**Finish:** Matte white RAL 9010**Dimensions:** 847 x 67 x 112 mm**Weight:** 2.060 g**Installation:****TECHNICAL SPECIFICATIONS:**

<b>Light output:</b>	1.397 lm	<b>°K :</b>	TW
<b>Plum:</b>	17,9W	<b>CRI :</b>	90
<b>Efficacy:</b>	78 lm/w	<b>MacAdam:</b>	3
<b>UGR:</b>	<19	<b>Power Supply:</b>	220-240V 50/60Hz
<b>Type:</b>	MID POWER LED	<b>Gear:</b>	Adjustable DALI DT8
<b>LED Lifetime:</b>	50.000 L80 B10 (Ta=25°C)		
<b>Power:</b>	13.9W		

*Light output tolerance +/- 10%***CUSTOM MADE OPTIONS:**

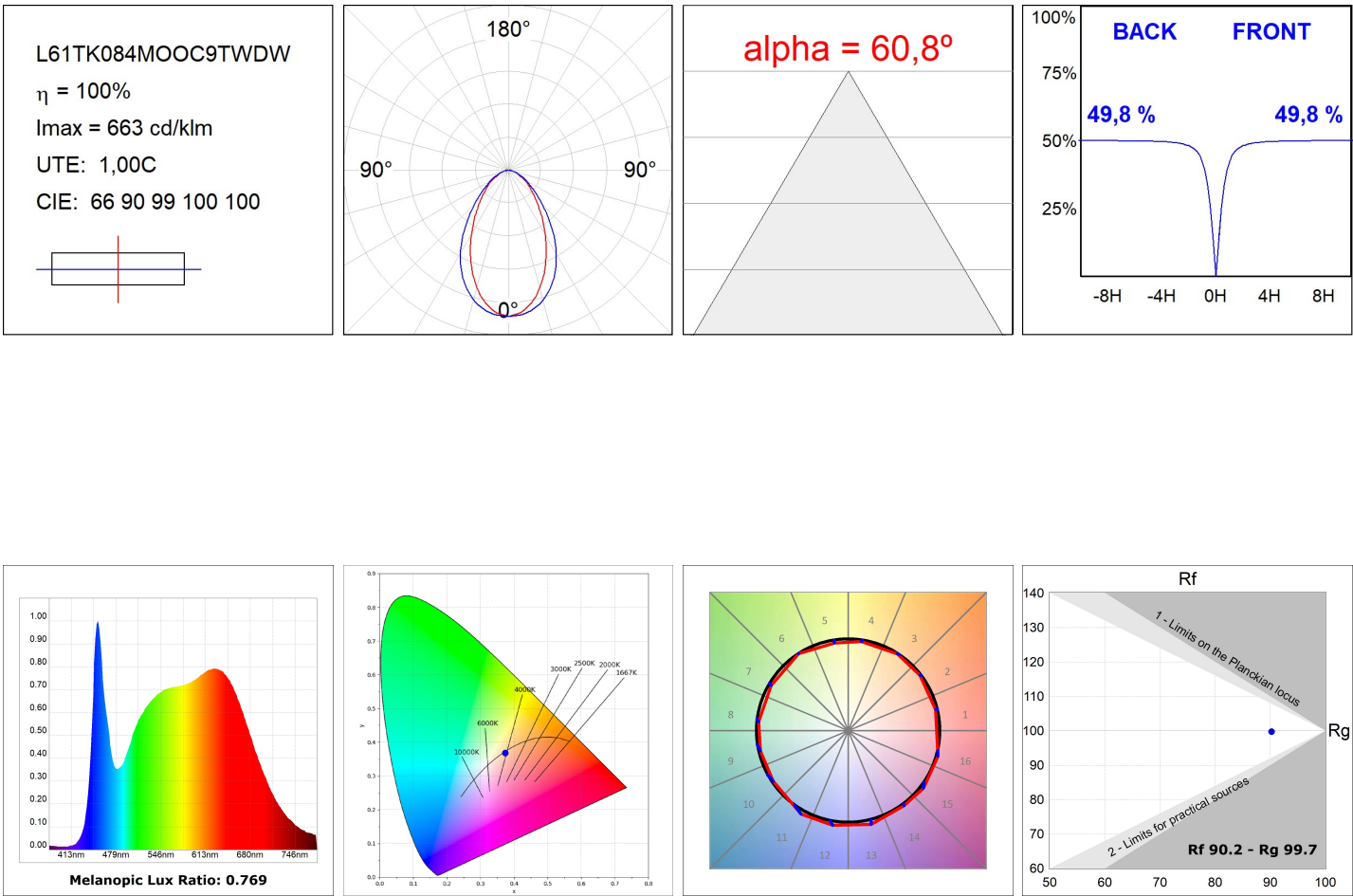
LAMPTUB 60 SURFACE TRACK



L61TK084MOOC9TWDW

LTUB60 TRACK 220 840 2400 TW COMF DA WH

PHOTOMETRIC DATA :



ACCESORIES :

Assembly



**Product code:**  
L6SUECB

**Description:**  
LTUB60 ACC. SUR END COVER BK.



**Product code:**  
L6SUECW

**Description:**  
LTUB60 ACC. SUR END COVER WH.



**Product code:**  
L6SUECW3

**Description:**  
LTUB60 ACC. SUR END COVER WE.



**Product code:**  
L6SUECW4

**Description:**  
LTUB60 ACC. SUR END COVER BS.