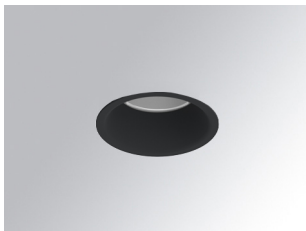


# KOMBIC 70 DOWNLIGHT

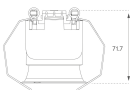
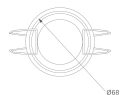
K711523RW830DBB



**KOMBIC 70 1500 IP23 WW RF WFL DA BK/BK**

**Description:**

KOMBIC 70 round recessed downlight by LAMP. Reflector made of recycled polycarbonate R-PC FR WHITE TM non-brominated flame retardant additive. Flammability grade V0 according to UL94. Inner reflector finished in black. Heatsink made of die-cast aluminium with black finish. COB LED, colour temperature 3000K with CRI80. Luminaire with DALI wiring included. Insulation class II. LED life time: 66000 L90 B10. With IP23 degree of protection. Group 0 photobiological safety. Reflector Wide Flood to achieve a controlled light distribution and low UGR<16



**Finish:** Matte black RAL 9011

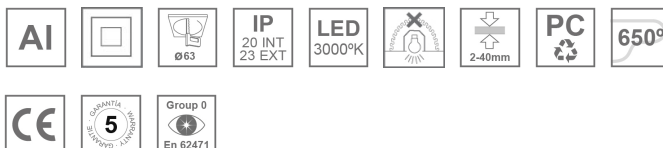
**Weight:** 190 g

**Installation:** Recessed

**TECHNICAL SPECIFICATIONS:**

<b>Light output:</b>	895 lm	<b>°K :</b>	3000
<b>Plum:</b>	9,5W	<b>CRI :</b>	80
<b>Efficacy:</b>	94,2 lm/w	<b>MacAdam:</b>	3
<b>UGR:</b>	<16	<b>Power Supply:</b>	220-240V 50/60Hz
<b>Type:</b>	COB	<b>Gear:</b>	Adjustable DALI
<b>LED Lifetime:</b>	66.000 L90 B10 (Ta=25°C)		
<b>Power:</b>	8,4W		

*Light output tolerance +/- 10%*



**CUSTOM MADE OPTIONS:**



# KOMBIC 70 DOWNLIGHT

K711523RW830DBB

KOMBIC 70 1500 IP23 WW RF WFL DA BK/BK

## PHOTOMETRIC DATA :

K711523RW830DBB  
 $\eta = 100\%$   
 $I_{max} = 1630 \text{ cd/klm}$   
UTE:  
CIE: 99 100 100 100 100

