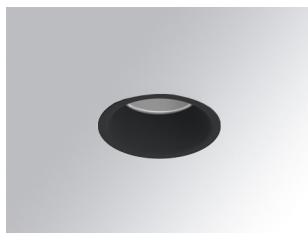


KOMBIC 70 DOWNLIGHT

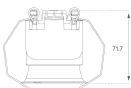
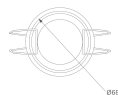
K711523RF927NBB



KOMBIC 70 1500 IP23 9VWW RF FL BK/BK

Description:

KOMBIC 70 round recessed downlight by LAMP. Reflector made of recycled polycarbonate R-PC FR WHITE TM non-brominated flame retardant additive. Flammability grade V0 according to UL94. Inner reflector finished in black. Heatsink made of die-cast aluminium with black finish. COB LED, colour temperature 2700K with CRI90. Luminaire with electronic wiring included. Insulation class II. LED life time: 66000 L90 B10. With IP23 degree of protection. Group 0 photobiological safety. Reflector Flood to achieve a controlled light distribution and low UGR<16



Finish: Matte black RAL 9011

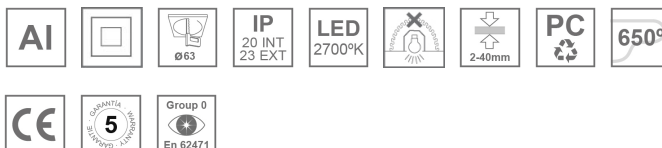
Weight: 190 g

Installation: Recessed

TECHNICAL SPECIFICATIONS:

Light output:	840 lm	°K :	2700
Plum:	9,5W	CRI :	90
Efficacy:	88,4 lm/w	R9 :	59
UGR:	<16	MacAdam:	3
Type:	COB	Power Supply:	220-240V 50/60Hz
LED Lifetime:	66.000 L90 B10 (Ta=25°C)	Gear:	Electronic
Power:	8,4W		

Light output tolerance +/- 10%



CUSTOM MADE OPTIONS:



KOMBIC 70 DOWNLIGHT

K711523RF927NBB

KOMBIC 70 1500 IP23 9VWW RF FL BK/BK

PHOTOMETRIC DATA :

K711523RF927NBB
 $\eta = 100\%$
 $I_{max} = 2619 \text{ cd/klm}$
 UTE:
 CIE: 101 100 100 100 100

