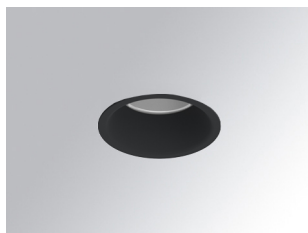


KOMBIC 70 DOWNLIGHT

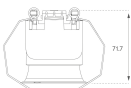
K711523RF840DBB



- KOMBIC 70 1500 IP23 NW RF FL DA BK/BK

Description:

KOMBIC 70 round recessed downlight by LAMP. Reflector made of recycled polycarbonate R-PC FR WHITE TM non-brominated flame retardant additive. Flammability grade V0 according to UL94. Inner reflector finished in black. Heatsink made of die-cast aluminium with black finish. COB LED, colour temperature 4000K with CRI80. Luminaire with electronic DALI wiring included. Insulation class II. LED life time: 66000 L90 B10. With IP23 degree of protection. Group 0 photobiological safety. Reflector Flood to achieve a controlled light distribution and low UGR<16



Finish: Matte black RAL 9011

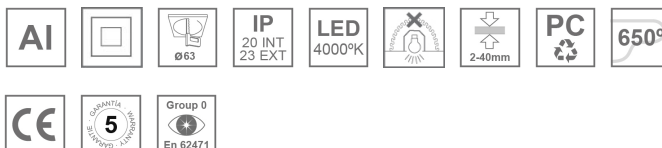
Weight: 190 g

Installation: Recessed

TECHNICAL SPECIFICATIONS:

Light output:	1.080 lm	°K :	4000
Plum:	9,5W	CRI :	80
Efficacy:	113,6 lm/w	MacAdam:	3
UGR:	<16	Power Supply:	220-240V 50/60Hz
Type:	COB	Gear:	Adjustable DALI
LED Lifetime:	66.000 L90 B10 (Ta=25°C)		
Power:	8,4W		

Light output tolerance +/- 10%



CUSTOM MADE OPTIONS:



KOMBIC 70 DOWNLIGHT

K711523RF840DBB

KOMBIC 70 1500 IP23 NW RF FL DA BK/BK

PHOTOMETRIC DATA :

