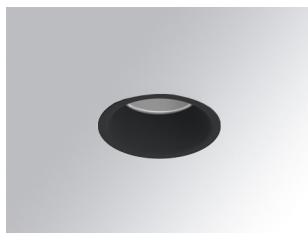


# KOMBIC 70 DOWNLIGHT

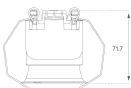
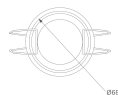
K711523EL940DBB



- KOMBIC 70 1500 IP43 9NW ELI. DA BK/BK

**Description:**

KOMBIC 70 round recessed downlight by LAMP. Reflector made of recycled polycarbonate R-PC FR WHITE TM non-brominated flame retardant additive. Flammability grade V0 according to UL94. Inner reflector finished in black. Elliptical optic option is the perfect choice for lighting walkways and longitudinal areas such as counters or areas adjacent to work areas. This product allows for increased spacing between luminaires, reducing the effect of residual light on walls and providing a pleasant atmosphere in the space. Heatsink made of die-cast aluminium with black finish. LED COB, colour temperature 4000K with IRC90. Luminaire with electronic wiring Dali included. Insulation class II. LED life time: 66000 L90 B10. With IP43 degree of protection. Group 0 photobiological safety.



**Finish:** Matte black RAL 9011

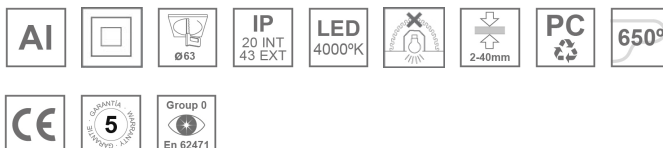
**Weight:** 190 g

**Installation:** Recessed

**TECHNICAL SPECIFICATIONS:**

<b>Light output:</b>	731 lm	<b>°K :</b>	4000
<b>Plum:</b>	9,5W	<b>CRI :</b>	90
<b>Efficacy:</b>	76,9 lm/w	<b>R9 :</b>	68
<b>Type:</b>	COB	<b>MacAdam:</b>	3
<b>LED Lifetime:</b>	66.000 L90 B10 (Ta=25°C)	<b>Power Supply:</b>	220-240V 50/60Hz
<b>Power:</b>	8,4W	<b>Gear:</b>	Adjustable DALI

*Light output tolerance +/- 10%*



**CUSTOM MADE OPTIONS:**



# KOMBIC 70 DOWNLIGHT

K711523EL940DBB

KOMBIC 70 1500 IP43 9NW ELI. DA BK/BK

**PHOTOMETRIC DATA :**

