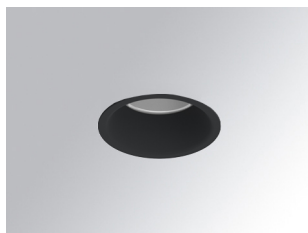


KOMBIC 70 DOWNLIGHT

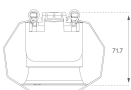
K711523EL827DBB



- KOMBIC 70 1500 IP43 VWW ELI. DA BK/BK

Description:

KOMBIC 70 round recessed downlight by LAMP. Reflector made of recycled polycarbonate R-PC FR WHITE TM non-brominated flame retardant additive. Flammability grade V0 according to UL94. Inner reflector finished in black. Elliptical optic option is the perfect choice for lighting walkways and longitudinal areas such as counters or areas adjacent to work areas. This product allows for increased spacing between luminaires, reducing the effect of residual light on walls and providing a pleasant atmosphere in the space. Heatsink made of die-cast aluminium with black finish. LED COB, colour temperature 2700K with IRC80. Luminaire with electronic wiring Dali included. Insulation class II. LED life time: 66000 L90 B10. With IP43 degree of protection. Group 0 photobiological safety.



Finish: Matte black RAL 9011

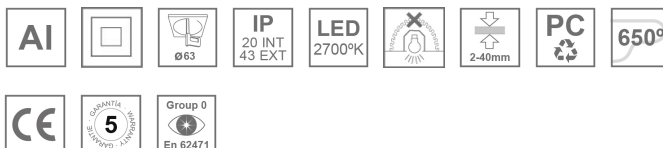
Weight: 190 g

Installation: Recessed

TECHNICAL SPECIFICATIONS:

Light output:	768 lm	°K :	2700
Plum:	9,5W	CRI :	80
Efficacy:	80,8 lm/w	MacAdam:	3
Type:	COB	Power Supply:	220-240V 50/60Hz
LED Lifetime:	66.000 L90 B10 (Ta=25°C)	Gear:	Adjustable DALI
Power:	8,4W		

Light output tolerance +/- 10%



CUSTOM MADE OPTIONS:



KOMBIC 70 DOWNLIGHT

K711523EL827DBB

KOMBIC 70 1500 IP43 VWW ELI. DA BK/BK

PHOTOMETRIC DATA :

