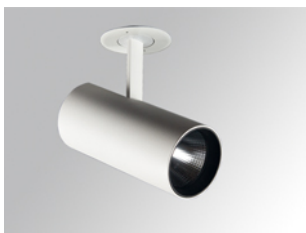


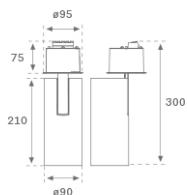
**HS2SR40FL840DW**



**HANCE G2 SEMIREC 4000 NW FL DALI WH**

**Description:**

LAMP semi-recessed multidirectional spotlight HANCE G2 SEMIREC 4000. Allowing 355° rotation and tilting up to 90°. Body made of die-cast aluminium for proper thermal management. Black polycarbonate injection moulded anti-glare ring. 35° flood reflector. LED COB, 4000K and CRI80. Electronic DALI control gear included. IP20, IK07 ratings. Insulation Class II. LED life time: 72.000 L80B10 (Ta=25°C). Available finishes: Textured white and textured black.



**Finish:** Texturised white RAL 9010

**Installation:** Semi-Recessed

**TECHNICAL SPECIFICATIONS:**

<b>Light output:</b>	4.467 lm	<b>°K :</b>	4000
<b>Plum:</b>	36,7W	<b>CRI :</b>	80
<b>Efficacy:</b>	121,7 lm/w	<b>R9 :</b>	64
<b>Type:</b>	COB	<b>MacAdam:</b>	3
<b>LED Lifetime:</b>	72.000 L80B10 (Ta=25°C)	<b>Power Supply:</b>	220-240V 50/60Hz
<b>Power:</b>	33W	<b>Gear:</b>	Adjustable DALI

*Light output tolerance +/- 10%*



**CUSTOM MADE OPTIONS:**

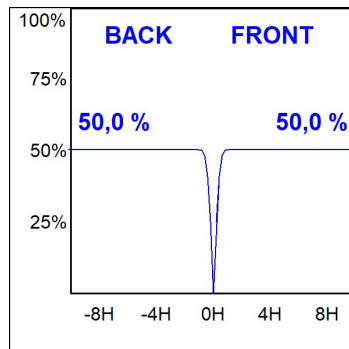
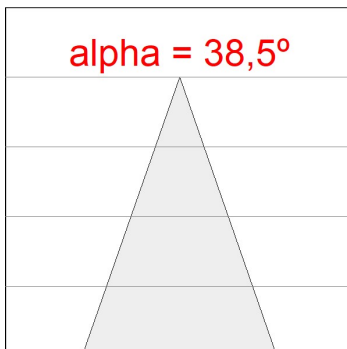
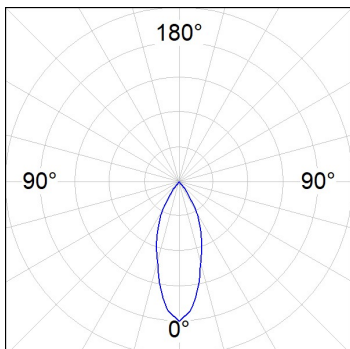


HS2SR40FL840DW

HANCE G2 SEMIREC 4000 NW FL DALI WH

PHOTOMETRIC DATA :

HS2SR40FL840DW  
 $\eta = 100\%$   
 $I_{max} = 2005 \text{ cd/klm}$   
UTE:  
CIE: 100 100 100 100 100



---

**ACCESORIES :**

**Optical**



**Product code:**

HSSL50

**Description:**

HANCE 1000/2000 ACC. SOFT LENS