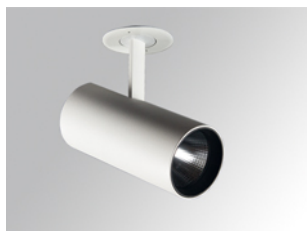


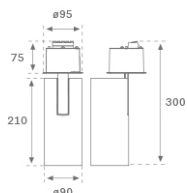
**HS2SR30SP840NW**



**HANCE G2 SEMIREC 3000 NW SP WH**

**Description:**

LAMP semi-recessed multidirectional spotlight HANCE G2 SEMIREC 3000. Allowing 355° rotation and tilting up to 90°. Body made of die-cast aluminium for proper thermal management. Black polycarbonate injection moulded anti-glare ring. 20° spot reflector. LED COB, 4000K y CRI80. Electronic ON OFF control gear included. IP20, IK07 ratings. Insulation Class II. LED life time: 72.000 L80B10 (Ta=25°C). Available finishes: Textured white and textured black.



**Finish:** Texturised white RAL 9010

**Installation:** Semi-Recessed

**TECHNICAL SPECIFICATIONS:**

<b>Light output:</b>	3.419 lm	<b>°K :</b>	4000
<b>Plum:</b>	28,3W	<b>CRI :</b>	80
<b>Efficacy:</b>	120,8 lm/w	<b>R9 :</b>	64
<b>UGR:</b>	<19	<b>MacAdam:</b>	3
<b>Type:</b>	COB	<b>Power Supply:</b>	220-240V 50/60Hz
<b>LED Lifetime:</b>	72.000 L80B10 (Ta=25°C)	<b>Gear:</b>	Electronic
<b>Power:</b>	25W		

*Light output tolerance +/- 10%*



**CUSTOM MADE OPTIONS:**

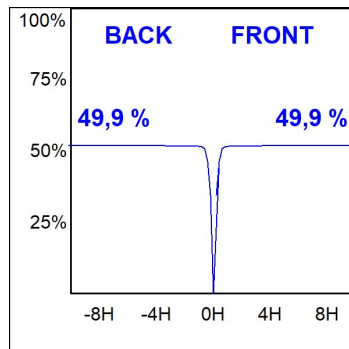
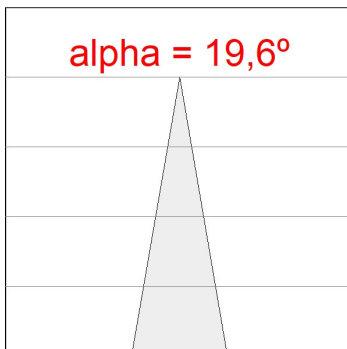
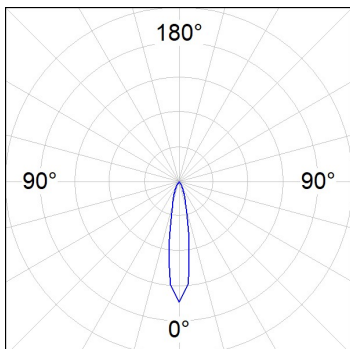


HS2SR30SP840NW

HANCE G2 SEMIREC 3000 NW SP WH

PHOTOMETRIC DATA :

HS2SR30SP840NW  
 $\eta = 100\%$   
 $I_{max} = 5192 \text{ cd/klm}$   
UTE:  
CIE: 102 100 100 100 100



**ACCESORIES :**

**Optical**



**Product code:**  
HS2HO75

**Description:**  
HANCE G2 3000/4000 ACC. HONEYCOMB GRILLE



**Product code:**  
HS2RI90C

**Description:**  
HANCE G2 3000/4000 ACC. RING DECO CO.



**Product code:**  
HS2RI90M

**Description:**  
HANCE G2 3000/4000 ACC. RING DECO MET.



**Product code:**  
HS2RI90W

**Description:**  
HANCE G2 3000/4000 ACC. RING DECO WH.



**Product code:**  
HS2TR75

**Description:**  
HANCE G2 3000/4000 ACC. DIF TRANS



**Product code:**  
HSSL50

**Description:**  
HANCE 1000/2000 ACC. SOFT LENS