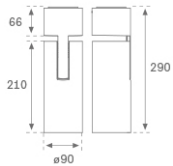
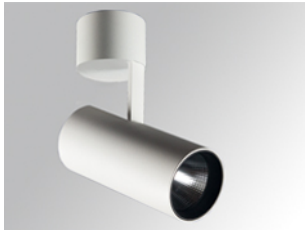


HS2SF30MF830DW



HANCE G2 SUR 3000 WW MFL DALI WH

Description:

LAMP surface multidirectional spotlight HANCE G2 SUR 3000. Allowing 355° rotation and tilting up to 90°. Body made of die-cast aluminium for proper thermal management. Black polycarbonate injection moulded anti-glare ring. 25° middle flood reflector. LED COB, 3000K and CRI80. Electronic DALI control gear included. IP20, IK07 ratings. Insulation Class I. LED life time: 72.000 L80B10 (Ta=25°C). Available finishes: Textured white and textured black.

Finish: Texturised white RAL 9010

Installation: Surface

TECHNICAL SPECIFICATIONS:

| | | | |
|----------------------|-------------------------|----------------------|------------------|
| Light output: | 3.356 lm | °K : | 3000 |
| Plum: | 28,3W | CRI : | 80 |
| Efficacy: | 118,6 lm/w | R9 : | 61 |
| UGR: | <19 | MacAdam: | 3 |
| Type: | COB | Power Supply: | 220-240V 50/60Hz |
| LED Lifetime: | 72.000 L80B10 (Ta=25°C) | Gear: | Adjustable DALI |
| Power: | 25W | | |

Light output tolerance +/- 10%



CUSTOM MADE OPTIONS:

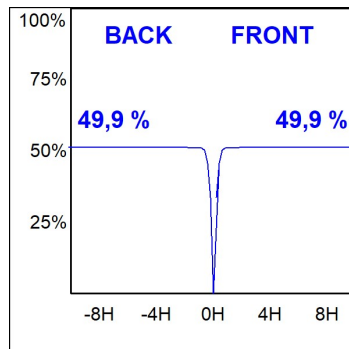
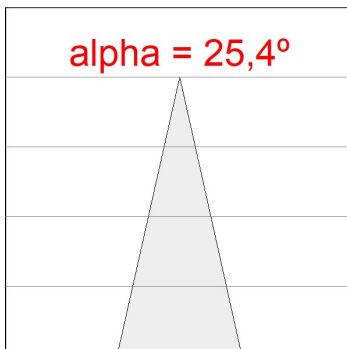
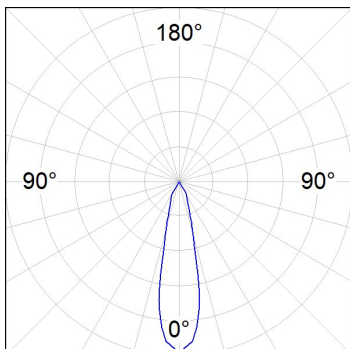


HS2SF30MF830DW

HANCE G2 SUR 3000 WW MFL DALI WH

PHOTOMETRIC DATA :

HS2SF30MF830DW
 $\eta = 100\%$
 $I_{max} = 3926 \text{ cd/klm}$
UTE:
CIE: 101 100 100 100 100



ACCESORIES :

Optical



Product code:

HSSL50

Description:

HANCE 1000/2000 ACC. SOFT LENS