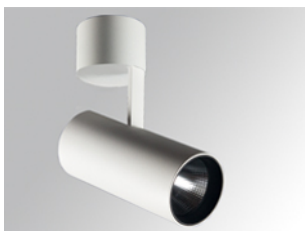


HS2SF30FL840NW

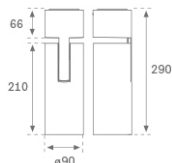


HANCE G2 SUR 3000 NW FL WH

Description:

LAMP surface multidirectional spotlight HANCE G2 SUR 3000 . Allowing 355° rotation and tilting up to 90°. Body made of die-cast aluminium for proper thermal management. Black polycarbonate injection moulded anti-glare ring. 35° flood reflector. LED COB, 4000K y CRI80. Electronic ON OFF control gear included. IP20, IK07 ratings. Insulation Class I. LED life time: 72.000 L80B10 (Ta=25°C). Available finishes: Textured white and textured black.

Finish: Texturised white RAL 9010



Installation: Surface

TECHNICAL SPECIFICATIONS:

Light output:	3.318 lm	°K :	4000
Plum:	28,3W	CRI :	80
Efficacy:	117,2 lm/w	R9 :	64
UGR:	<19	MacAdam:	3
Type:	COB	Power Supply:	220-240V 50/60Hz
LED Lifetime:	72.000 L80B10 (Ta=25°C)	Gear:	Electronic
Power:	25W		

Light output tolerance +/- 10%



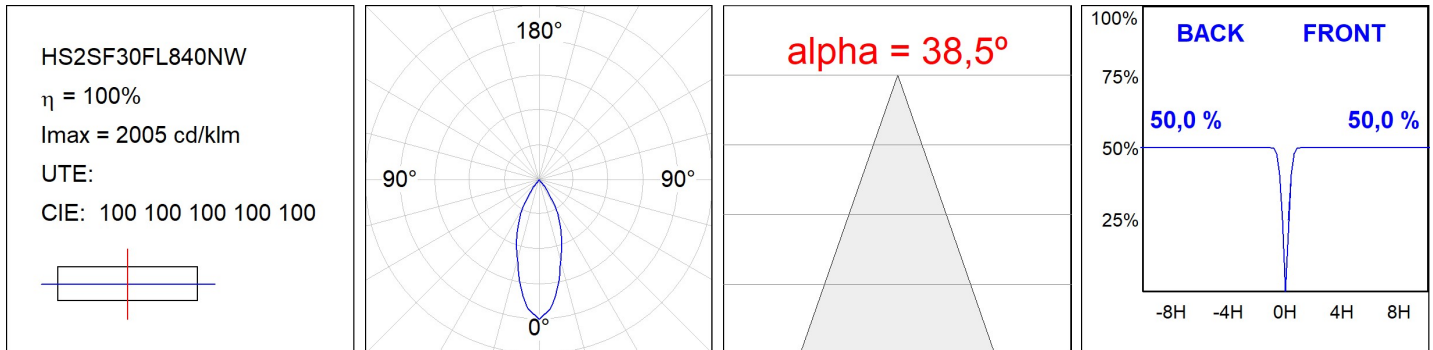
CUSTOM MADE OPTIONS:



HS2SF30FL840NW

HANCE G2 SUR 3000 NW FL WH

PHOTOMETRIC DATA :



ACCESORIES :

Optical



Product code:

HSSL50

Description:

HANCE 1000/2000 ACC. SOFT LENS