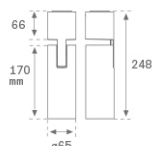


HS2SF10SS940DB

HANCE G2 SUR 1000 9NW SSP DALI BK
Description:

LAMP surface multidirectional spotlight HANCE G2 SUR 1000. Allowing 355° rotation and tilting up to 90°. Body made of die-cast aluminium for proper thermal management. Black polycarbonate injection moulded anti-glare ring. 10° super spot polycarbonate optics. LED HIGH POWER, 4000K and CRI90. Electronic DALI control gear included. IP20, IK07 ratings. Insulation Class I. LED life time: 50.000 L80B10 (Ta=25°C). Available finishes: Textured white and textured black.

Finish: Texturised black RAL 9011

Installation: Surface

TECHNICAL SPECIFICATIONS:

Light output:	737 lm	°K :	4000
Plum:	13,9W	CRI :	90
Efficacy:	53 lm/w	R9 :	62
UGR:	<16	MacAdam:	3
Type:	HIGH POWER	Power Supply:	220-240V 50/60Hz
LED Lifetime:	50.000 L80B10 (Ta=25°C)	Gear:	Adjustable DALI
Power:	13W		

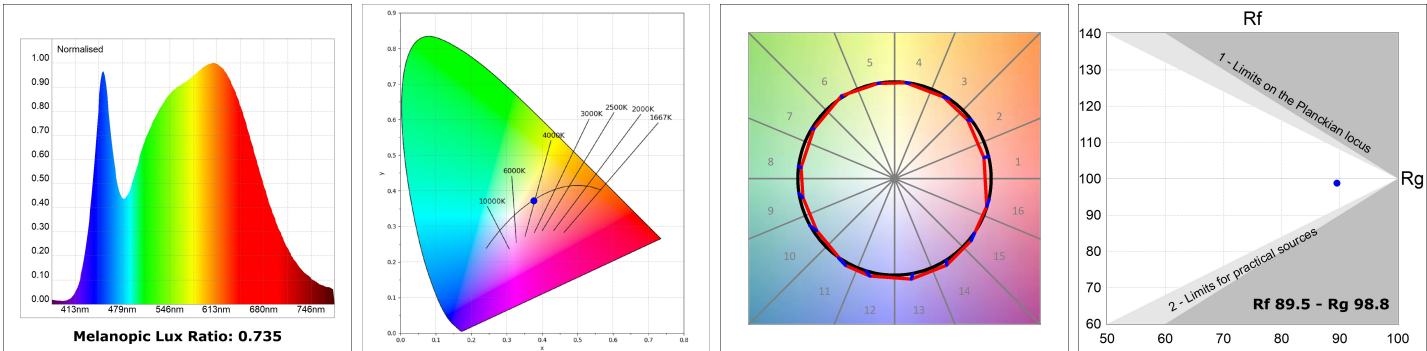
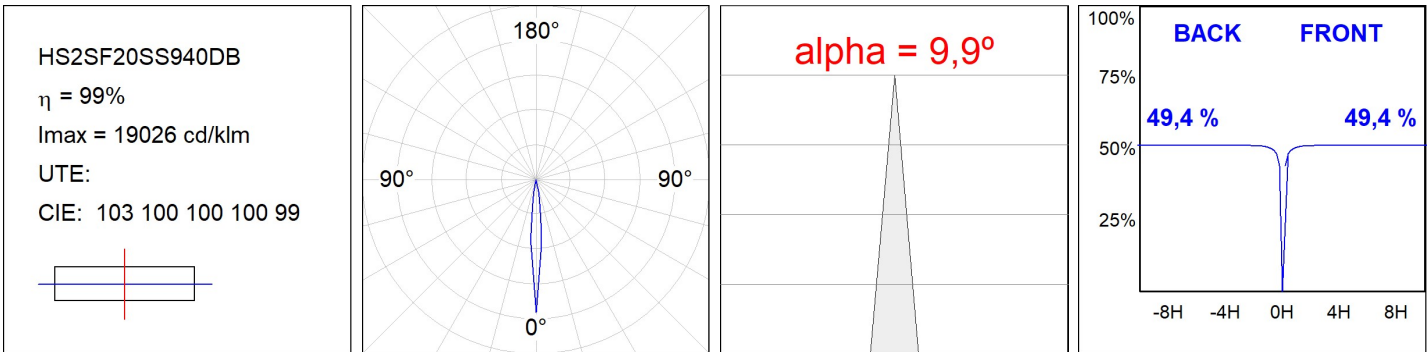
Light output tolerance +/- 10%


CUSTOM MADE OPTIONS:


HS2SF10SS940DB

HANCE G2 SUR 1000 9NW SSP DALI BK

PHOTOMETRIC DATA :



ACCESORIES :**Optical****Product code:**

HSCU50

Description:

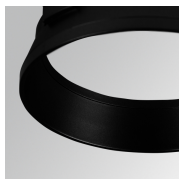
HANCE 1000/2000 ACC. CUTTING BEAM

**Product code:**

HSHO50

Description:

HANCE 1000/2000 ACC. HONEYCOMB GRILLE

**Product code:**

HSRI65B

Description:

HANCE 1000/2000 ACC. RING DECO BK.

**Product code:**

HSRI65C

Description:

HANCE 1000/2000 ACC. RING DECO CO.

**Product code:**

HSRI65M

Description:

HANCE 1000/2000 ACC. RING DECO MET.

**Product code:**

HSRI65W

Description:

HANCE 1000/2000 ACC. RING DECO WH.

**Product code:**

HSSL50

Description:

HANCE 1000/2000 ACC. SOFT LENS

**Product code:**

HSTR50

Description:

HANCE 1000/2000 ACC. DIF TRANS