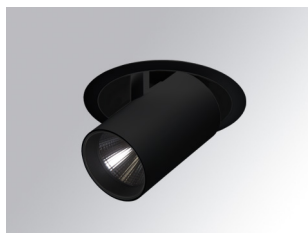


# HANCE DOWNLIGHT

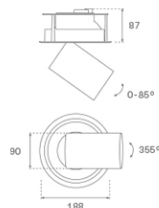
HD2SR40SP940NB



## HANCE G2 DOWN SEMIREC 4000 9NW SP BK

### Description:

LAMP multidirectional semi-recessed downlight HANCE G2 DOWN SEMIREC 4000. Allowing 355° rotation and tilting up to 85°. Body and frame made of die-cast aluminium for proper thermal management. Black polycarbonate injection moulded anti-glare ring. 20° spot reflector. LED COB, 4000K and CRI90. Electronic ON OFF control gear included. IP20, IK07 ratings. Insulation Class II. LED life time: 72.000 L80B10 (Ta=25°C). Available finishes: Textured white and textured black.



**Finish:** Texturised black RAL 9011

**Installation:** Recessed

### TECHNICAL SPECIFICATIONS:

<b>Light output:</b>	3.994 lm	<b>°K :</b>	4000
<b>Plum:</b>	36,7W	<b>CRI :</b>	90
<b>Efficacy:</b>	108,8 lm/w	<b>R9 :</b>	64
<b>UGR:</b>	<19	<b>MacAdam:</b>	3
<b>Type:</b>	COB	<b>Power Supply:</b>	220-240V 50/60Hz
<b>LED Lifetime:</b>	72.000 L80B10 (Ta=25°C)	<b>Gear:</b>	Electronic
<b>Power:</b>	33W		

*Light output tolerance +/- 10%*



### CUSTOM MADE OPTIONS:



# HANCE DOWNLIGHT

HD2SR40SP940NB

HANCE G2 DOWN SEMIREC 4000 9NW SP BK

**PHOTOMETRIC DATA :**

HD2SR40SP940NB  
 $\eta = 100\%$   
 $I_{max} = 5192 \text{ cd/klm}$   
 UTE:  
 CIE: 102 100 100 100 100

