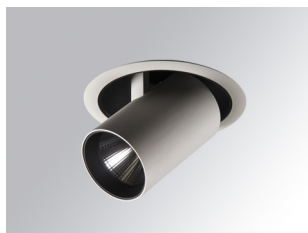


**HD2SR40SP840DW**



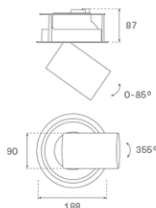
**HANCE G2 DOWN SEMIREC 4000 NW SP DALI WH**

**Description:**

LAMP multidirectional semi-recessed downlight HANCE G2 DOWN SEMIREC 4000. Allowing 355° rotation and tilting up to 85°. Body and frame made of die-cast aluminium for proper thermal management. Black polycarbonate injection moulded anti-glare ring. 20° spot reflector. LED COB, 4000K and CRI80. Electronic DALI control gear included. IP20, IK07 ratings. Insulation Class II. LED life time: 72.000 L80B10 (Ta=25°C). Available finishes: Textured white and textured black.

**Finish:** Texturised white RAL 9010

**Installation:** Recessed



**TECHNICAL SPECIFICATIONS:**

<b>Light output:</b>	4.694 lm	<b>°K :</b>	4000
<b>Plum:</b>	36,7W	<b>CRI :</b>	80
<b>Efficacy:</b>	127,9 lm/w	<b>R9 :</b>	64
<b>UGR:</b>	<19	<b>MacAdam:</b>	3
<b>Type:</b>	COB	<b>Power Supply:</b>	220-240V 50/60Hz
<b>LED Lifetime:</b>	72.000 L80B10 (Ta=25°C)	<b>Gear:</b>	Adjustable DALI
<b>Power:</b>	33W		

*Light output tolerance +/- 10%*



**CUSTOM MADE OPTIONS:**



HD2SR40SP840DW

HANCE G2 DOWN SEMIREC 4000 NW SP DALI WH

PHOTOMETRIC DATA :

