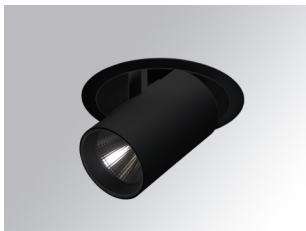


HANCE DOWNLIGHT

HD2SR40MF940NB



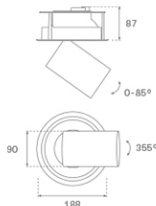
HANCE G2 DOWN SEMIREC 4000 9NW MFL BK

Description:

LAMP multidirectional semi-recessed downlight HANCE G2 DOWN SEMIREC 4000. Allowing 355° rotation and tilting up to 85°. Body and frame made of die-cast aluminium for proper thermal management. Black polycarbonate injection moulded anti-glare ring. 25° middle flood reflector. LED COB, 4000K and CRI90. Electronic ON OFF control gear included. IP20, IK07 ratings. Insulation Class II. LED life time: 72.000 L80B10 (Ta=25°C). Available finishes: Textured white and textured black.

Finish: Texturised black RAL 9011

Installation: Recessed



TECHNICAL SPECIFICATIONS:

Light output:	3.907 lm	°K :	4000
Plum:	36,7W	CRI :	90
Efficacy:	106,5 lm/w	R9 :	64
UGR:	<19	MacAdam:	3
Type:	COB	Power Supply:	220-240V 50/60Hz
LED Lifetime:	72.000 L80B10 (Ta=25°C)	Gear:	Electronic
Power:	33W		

Light output tolerance +/- 10%



CUSTOM MADE OPTIONS:



HANCE DOWNLIGHT

HD2SR40MF940NB

HANCE G2 DOWN SEMIREC 4000 9NW MFL BK

PHOTOMETRIC DATA :

HD2SR40MF940NB
 $\eta = 100\%$
 $I_{max} = 3926 \text{ cd/klm}$
 UTE:
 CIE: 101 100 100 100 100

