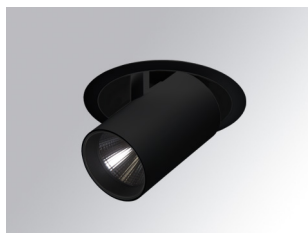


# HANCE DOWNLIGHT

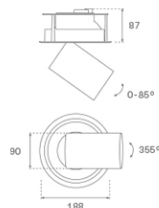
HD2SR40MF940DB



## HANCE G2 DOWN SEMIREC 4000 9NW MFL DA BK

### Description:

LAMP multidirectional semi-recessed downlight HANCE G2 DOWN SEMIREC 4000. Allowing 355° rotation and tilting up to 85°. Body and frame made of die-cast aluminium for proper thermal management. Black polycarbonate injection moulded anti-glare ring. 25° middle flood reflector. LED COB, 4000K and CRI90. Electronic DALI control gear included. IP20, IK07 ratings. Insulation Class II. LED life time: 72.000 L80B10 (Ta=25°C). Available finishes: Textured white and textured black.



**Finish:** Texturised black RAL 9011

**Installation:** Recessed

### TECHNICAL SPECIFICATIONS:

|                      |                         |                      |                  |
|----------------------|-------------------------|----------------------|------------------|
| <b>Light output:</b> | 3.907 lm                | <b>°K :</b>          | 4000             |
| <b>Plum:</b>         | 36,7W                   | <b>CRI :</b>         | 90               |
| <b>Efficacy:</b>     | 106,5 lm/w              | <b>R9 :</b>          | 64               |
| <b>UGR:</b>          | <19                     | <b>MacAdam:</b>      | 3                |
| <b>Type:</b>         | COB                     | <b>Power Supply:</b> | 220-240V 50/60Hz |
| <b>LED Lifetime:</b> | 72.000 L80B10 (Ta=25°C) | <b>Gear:</b>         | Adjustable DALI  |
| <b>Power:</b>        | 33W                     |                      |                  |

*Light output tolerance +/- 10%*



### CUSTOM MADE OPTIONS:



# HANCE DOWNLIGHT

HD2SR40MF940DB

HANCE G2 DOWN SEMIREC 4000 9NW MFL DA BK

**PHOTOMETRIC DATA :**

HD2SR40MF940DB  
 $\eta = 100\%$   
 $I_{max} = 3926 \text{ cd/klm}$   
 UTE:  
 CIE: 101 100 100 100 100

