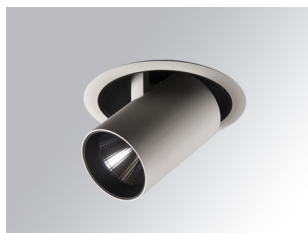


HANCE DOWNLIGHT

HD2SR40FL940NW



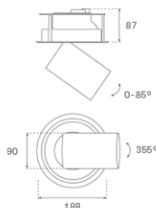
HANCE G2 DOWN SEMIREC 4000 9NW FL WH

Description:

LAMP multidirectional semi-recessed downlight HANCE G2 DOWN SEMIREC 4000. Allowing 355° rotation and tilting up to 85°. Body and frame made of die-cast aluminium for proper thermal management. Black polycarbonate injection moulded anti-glare ring. 35° flood reflector. LED COB, 4000K and CRI90. Electronic ON OFF control gear included. IP20, IK07 ratings. Insulation Class II. LED life time: 72.000 L80B10 (Ta=25°C). Available finishes: Textured white and textured black.

Finish: Texturised white RAL 9010

Installation: Recessed



TECHNICAL SPECIFICATIONS:

Light output:	3.800 lm	°K :	4000
Plum:	36,7W	CRI :	90
Efficacy:	103,5 lm/w	R9 :	64
Type:	COB	MacAdam:	3
LED Lifetime:	72.000 L80B10 (Ta=25°C)	Power Supply:	220-240V 50/60Hz
Power:	33W	Gear:	Electronic

Light output tolerance +/- 10%



CUSTOM MADE OPTIONS:



HANCE DOWNLIGHT

HD2SR40FL940NW

HANCE G2 DOWN SEMIREC 4000 9NW FL WH

PHOTOMETRIC DATA :

HD2SR40FL940NW
 $\eta = 100\%$
 $I_{max} = 2005 \text{ cd/klm}$
 UTE:
 CIE: 100 100 100 100 100

