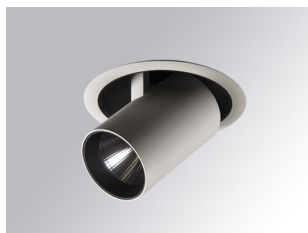


# HANCE DOWNLIGHT

HD2SR40FL940DW



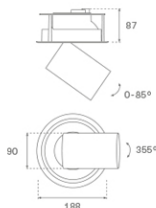
## HANCE G2 DOWN SEMIREC 4000 9NW FL DA WH

### Description:

LAMP multidirectional semi-recessed downlight HANCE G2 DOWN SEMIREC 4000. Allowing 355° rotation and tilting up to 85°. Body and frame made of die-cast aluminium for proper thermal management. Black polycarbonate injection moulded anti-glare ring. 35° flood reflector. LED COB, 4000K and CRI90. Electronic DALI control gear included. IP20, IK07 ratings. Insulation Class II. LED life time: 72.000 L80B10 (Ta=25°C). Available finishes: Textured white and textured black.

**Finish:** Texturised white RAL 9010

**Installation:** Recessed



### TECHNICAL SPECIFICATIONS:

<b>Light output:</b>	3.800 lm	<b>°K :</b>	4000
<b>Plum:</b>	36,7W	<b>CRI :</b>	90
<b>Efficacy:</b>	103,5 lm/w	<b>R9 :</b>	64
<b>Type:</b>	COB	<b>MacAdam:</b>	3
<b>LED Lifetime:</b>	72.000 L80B10 (Ta=25°C)	<b>Power Supply:</b>	220-240V 50/60Hz
<b>Power:</b>	33W	<b>Gear:</b>	Adjustable DALI

*Light output tolerance +/- 10%*



### CUSTOM MADE OPTIONS:



# HANCE DOWNLIGHT

HD2SR40FL940DW

HANCE G2 DOWN SEMIREC 4000 9NW FL DA WH

**PHOTOMETRIC DATA :**

HD2SR40FL940DW  
 $\eta = 100\%$   
 $I_{max} = 2005 \text{ cd/klm}$   
 UTE:  
 CIE: 100 100 100 100 100

