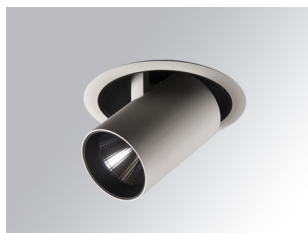


# HANCE DOWNLIGHT

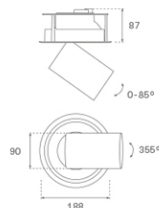
## HD2SR30SP930DW



### HANCE G2 DOWN SEMIREC 3000 9WW SP DA WH

**Description:**

LAMP multidirectional semi-recessed downlight HANCE G2 DOWN SEMIREC 3000. Allowing 355° rotation and tilting up to 85°. Body and frame made of die-cast aluminium for proper thermal management. Black polycarbonate injection moulded anti-glare ring. 20° spot reflector. LED COB, 3000K and CRI90. Electronic DALI control gear included. IP20, IK07 ratings. Insulation Class II. LED life time: 72.000 L80B10 (Ta=25°C). Available finishes: Textured white and textured black.



**Finish:** Texturised white RAL 9010

**Installation:** Recessed

**TECHNICAL SPECIFICATIONS:**

<b>Light output:</b>	2.759 lm	<b>°K :</b>	3000
<b>Plum:</b>	28,3W	<b>CRI :</b>	90
<b>Efficacy:</b>	97,5 lm/w	<b>R9 :</b>	61
<b>UGR:</b>	<19	<b>MacAdam:</b>	3
<b>Type:</b>	COB	<b>Power Supply:</b>	220-240V 50/60Hz
<b>LED Lifetime:</b>	72.000 L80B10 (Ta=25°C)	<b>Gear:</b>	Adjustable DALI
<b>Power:</b>	25W		

*Light output tolerance +/- 10%*



**CUSTOM MADE OPTIONS:**



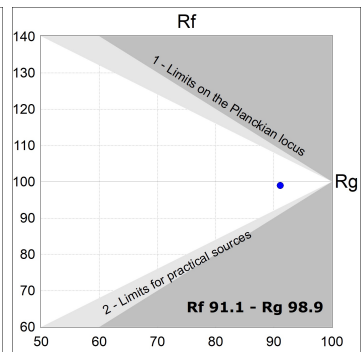
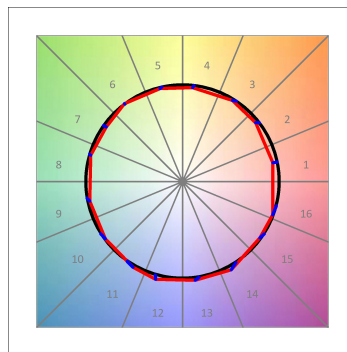
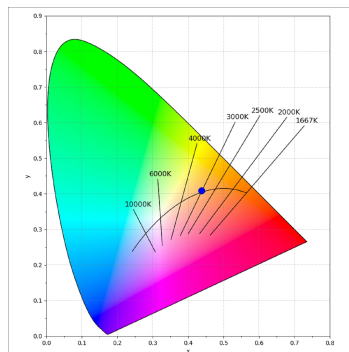
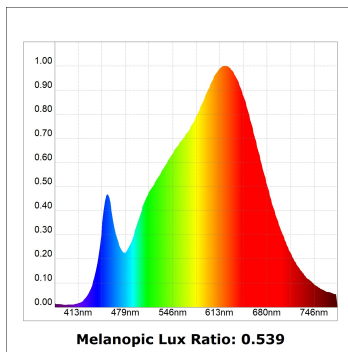
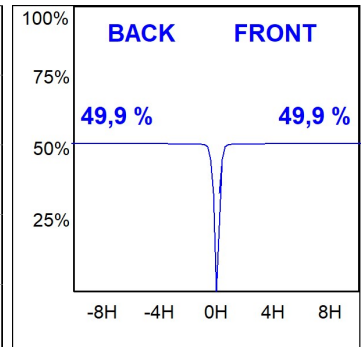
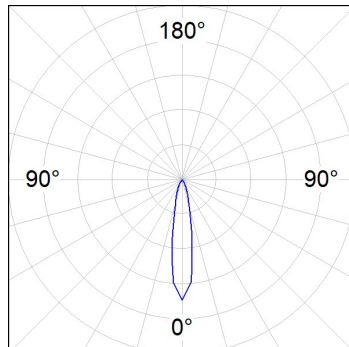
**HANCE DOWNLIGHT**

HD2SR30SP930DW

HANCE G2 DOWN SEMIREC 3000 9WW SP DA WH

**PHOTOMETRIC DATA :**

HD2SR30SP930DW  
 $\eta = 100\%$   
 $I_{max} = 5192 \text{ cd/klm}$   
 UTE:  
 CIE: 102 100 100 100 100



ACCESORIES :

Optical



**Product code:**

HS2HO75

**Description:**

HANCE G2 3000/4000 ACC. HONEYCOMB GRILLE



**Product code:**

HS2RI90C

**Description:**

HANCE G2 3000/4000 ACC. RING DECO CO.



**Product code:**

HS2RI90M

**Description:**

HANCE G2 3000/4000 ACC. RING DECO MET.



**Product code:**

HS2RI90W

**Description:**

HANCE G2 3000/4000 ACC. RING DECO WH.



**Product code:**

HS2TR75

**Description:**

HANCE G2 3000/4000 ACC. DIF TRANS