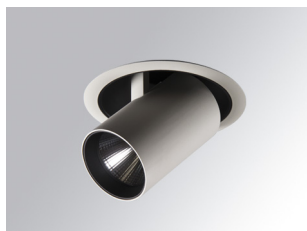


HD2SR30SP840DW



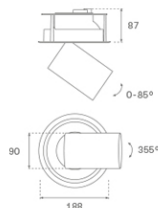
HANCE G2 DOWN SEMIREC 3000 NW SP DALI WH

Description:

LAMP multidirectional semi-recessed downlight HANCE G2 DOWN SEMIREC 3000. Allowing 355° rotation and tilting up to 85°. Body and frame made of die-cast aluminium for proper thermal management. Black polycarbonate injection moulded anti-glare ring. 20° spot reflector. LED COB, 4000K and CRI80. Electronic DALI control gear included. IP20, IK07 ratings. Insulation Class II. LED life time: 72.000 L80B10 (Ta=25°C). Available finishes: Textured white and textured black.

Finish: Texturised white RAL 9010

Installation: Recessed



TECHNICAL SPECIFICATIONS:

Light output:	3.419 lm	°K :	4000
Plum:	28,3W	CRI :	80
Efficacy:	120,8 lm/w	R9 :	64
UGR:	<19	MacAdam:	3
Type:	COB	Power Supply:	220-240V 50/60Hz
LED Lifetime:	72.000 L80B10 (Ta=25°C)	Gear:	Adjustable DALI
Power:	25W		

Light output tolerance +/- 10%

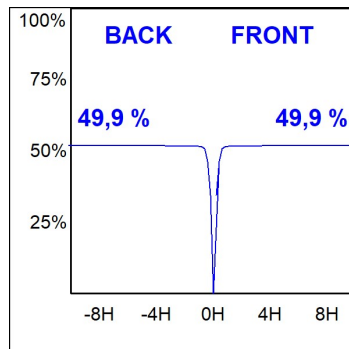
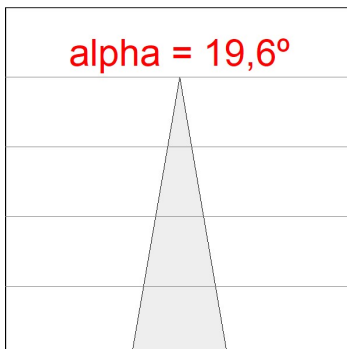
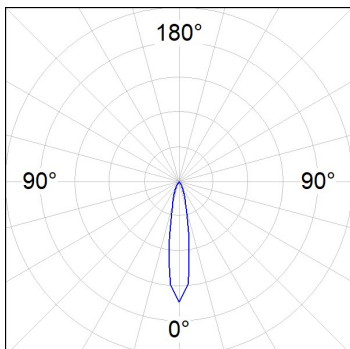


CUSTOM MADE OPTIONS:



PHOTOMETRIC DATA :

HD2SR30SP840DW
 $\eta = 100\%$
 $I_{max} = 5192 \text{ cd/klm}$
UTE:
CIE: 102 100 100 100 100



ACCESORIES :

Optical



Product code:

HS2HO75

Description:

HANCE G2 3000/4000 ACC. HONEYCOMB GRILLE



Product code:

HS2RI90C

Description:

HANCE G2 3000/4000 ACC. RING DECO CO.



Product code:

HS2RI90M

Description:

HANCE G2 3000/4000 ACC. RING DECO MET.



Product code:

HS2RI90W

Description:

HANCE G2 3000/4000 ACC. RING DECO WH.



Product code:

HS2TR75

Description:

HANCE G2 3000/4000 ACC. DIF TRANS