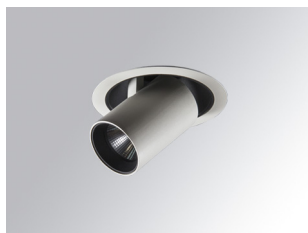


# HANCE DOWNLIGHT

HD2SR07SS930NW

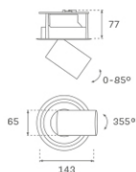


## HANCE G2 DOWN SEMIREC 700 9WW SSP WH

### Description:

LAMP multidirectional semi-recessed downlight HANCE G2 DOWN SEMIREC 700. Allowing 355° rotation and tilting up to 85°. Body and frame made of die-cast aluminium for proper thermal management. Black polycarbonate injection moulded anti-glare ring. 10° super spot polycarbonate optics. LED HIGH POWER, 3000K and CRI90. Electronic ON OFF control gear included. IP20, IK07 ratings. Insulation Class II. LED life time: 60.000 L90B10 (Ta=25°C). Available finishes: Textured white and textured black.

**Finish:** Texturised white RAL 9010



**Installation:** Recessed

### TECHNICAL SPECIFICATIONS:

<b>Light output:</b>	438 lm	<b>°K :</b>	3000
<b>Plum:</b>	8,6W	<b>CRI :</b>	90
<b>Efficacy:</b>	51 lm/w	<b>R9 :</b>	53
<b>UGR:</b>	<16	<b>MacAdam:</b>	3
<b>Type:</b>	HIGH POWER	<b>Power Supply:</b>	220-240V 50/60Hz
<b>LED Lifetime:</b>	60.000 L90B10 (Ta=25°C)	<b>Gear:</b>	Electronic
<b>Power:</b>	7W		

*Light output tolerance +/- 10%*



### CUSTOM MADE OPTIONS:



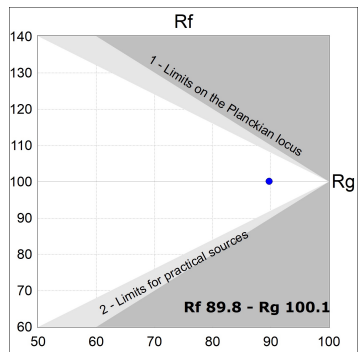
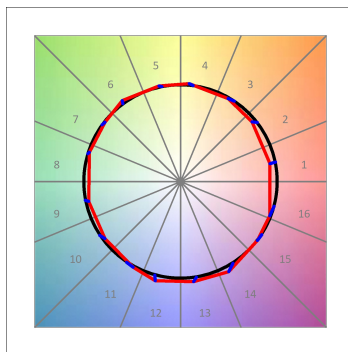
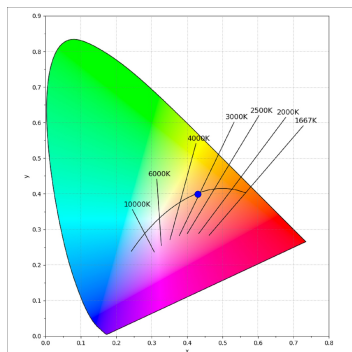
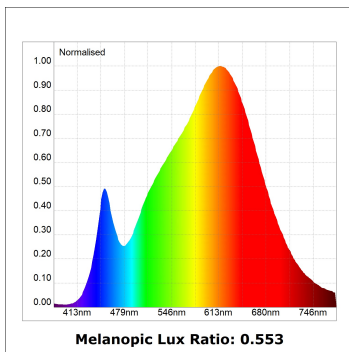
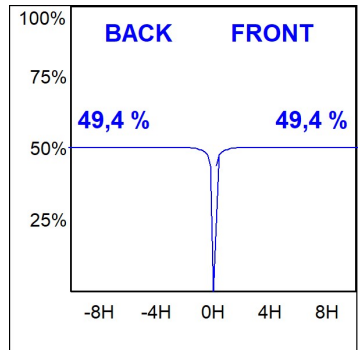
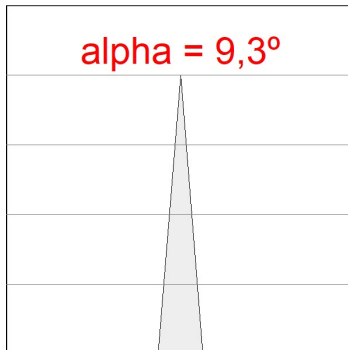
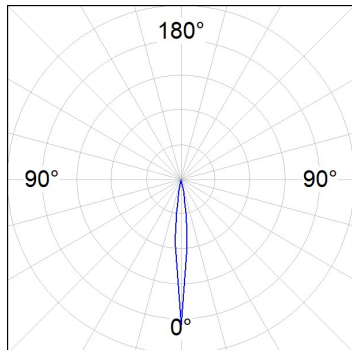
# HANCE DOWNLIGHT

HD2SR07SS930NW

HANCE G2 DOWN SEMIREC 700 9WW SSP WH

**PHOTOMETRIC DATA :**

HD2SR10SS930NW  
 $\eta = 99\%$   
 $I_{max} = 20858 \text{ cd/klm}$   
 UTE:  
 CIE: 103 100 100 100 99



**ACCESORIES :**

**Optical**



**Product code:**

HSRI65W

**Description:**

HANCE 1000/2000 ACC. RING DECO WH.



**Product code:**

HSTR50

**Description:**

HANCE 1000/2000 ACC. DIF TRANS