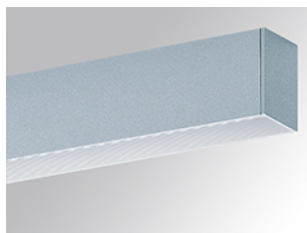


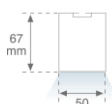
F53SF168HOPR830DG



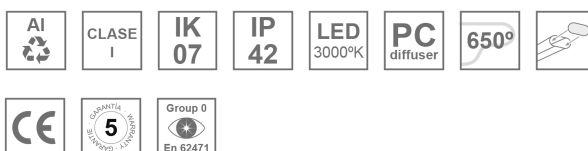
- FIL50 G3 SUR 1680 9300 WW PRISM DALI GR

Description:

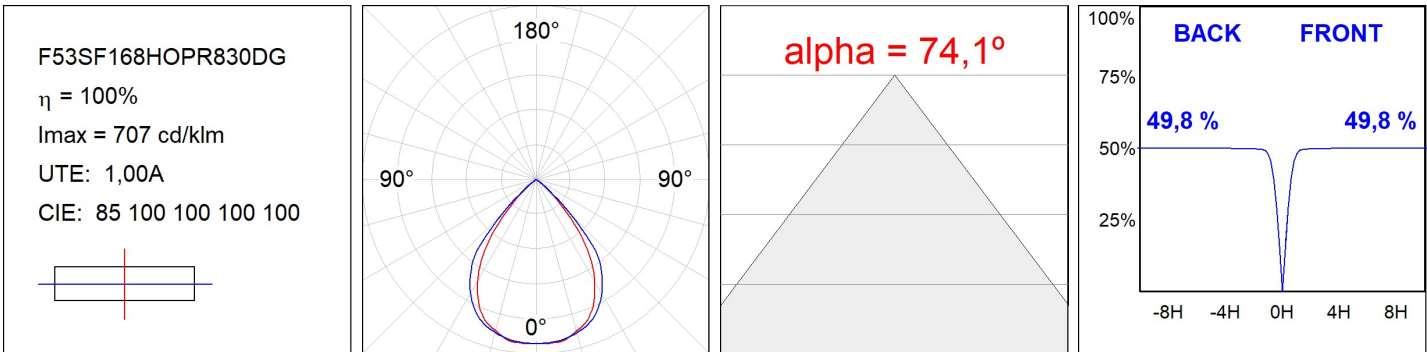
LAMP suspended or surface mounted structure FIL 50 SUR 1680. Manufactured from extruded aluminum with an 80% recycling rate, diffuser made of prismatic polycarbonate to control light distribution and reduce glare UGR<19. Model for MID-POWER LED, warm white colour temperature and control gear included. With h opal polycarbonate diffuser. With a IP43, except for suspended installation, which becomes IP20, IK07 protection rating. Insulation class I. Photobiological safety group 0. LED lifetime: 72.000 L80 B10. White and grey finishes available. Environmental Product Declaration - EPD@available, according to UNE-EN ISO 9001:2015 and UNE-EN ISO 14001:2015.

Finish: Gloss grey**Dimensions:** 1.683 x 50 x 67 mm**Weight:** 2.860 g**Installation:** Surface**TECHNICAL SPECIFICATIONS:**

| | | | |
|----------------------|--------------------------|----------------------|------------------|
| Light output: | 6.672 lm | °K : | 3000 |
| Plum: | 59,10W | CRI : | 80 |
| Efficacy: | 112,9 lm/w | MacAdam: | 3 |
| UGR: | <19 | Power Supply: | 220-240V 50/60Hz |
| Type: | MID POWER LED | Gear: | Adjustable DALI |
| LED Lifetime: | 72.000 L80 B10 (Ta=25°C) | | |
| Power: | 53.7W | | |

Light output tolerance +/- 10%**CUSTOM MADE OPTIONS:**

PHOTOMETRIC DATA :



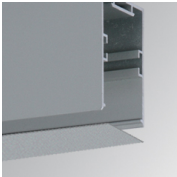
ACCESORIES :

Assembly



Product code:
ELWRST

Description:
ACC. ELECTROSTATICS WRIST STRAP



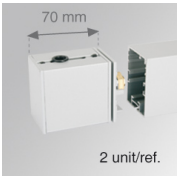
Product code:
F5COX/MMG
F5COX/MMW

Description:
FIL 50 ACC. COVER X/MM GR.
FIL 50 ACC. COVER X/MM WH.



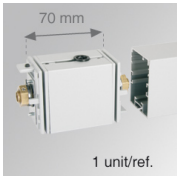
Product code:
F5JO

Description:
ACC. INTM JOINT B



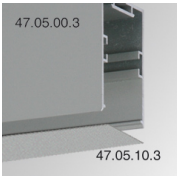
Product code:
F5JOROEDG
F5JOROEDW

Description:
FIL 50 ACC. SUS REV END COVER GR.
FIL 50 ACC. SUS REV END COVER WH.



Product code:
F5JOROIDG
F5JOROIDW

Description:
FIL 50 ACC. SUS REV INTM COVER GR.
FIL 50 ACC. SUS REV INTM COVER WH.



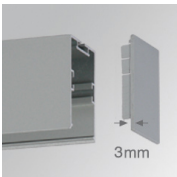
Product code:
F5PRSUX/MMG
F5PRSUX/MMW

Description:
FIL 50 ACC. SUS PROFIL X/MM GR.
FIL 50 ACC. SUS PROFIL X/MM WH.



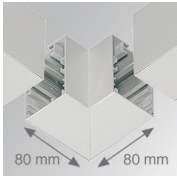
Product code:
F5SFVCG
F5SFVCW

Description:
FIL 50 ACC. 90° WALL CORNER GR.
FIL 50 ACC. 90° WALL CORNER WH.



Product code:
F5SUECG
F5SUECW

Description:
FIL 50 ACC. SUS END COVER PC GR.
FIL 50 ACC. SUS END COVER PC WH.



Product code:

F5SUHCG

F5SUHCW

Description:

FIL 50 ACC. SUS 90º CORNER GR.

FIL 50 ACC. SUS 90º CORNER WH.

ACCESORIES :

Suspension



Product code:

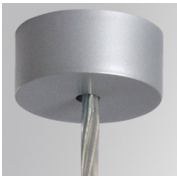
SFRG41G

SFRG41W

Description:

ACC. SUR FIXING NK.

ACC. SUR FIXING WH.



Product code:

SUCA4000DG

SUCA4000NG

Description:

ACC. ELEC 5P SUSP GR.

ACC. ELEC 3P SUSP GR.



Product code:

SUCA4000DW

SUCA4000NW

Description:

ACC. ELEC 5P SUSP WH.

ACC. ELEC 3P SUSP WH.



Product code:

SUCAEMDEG

Description:

ACC. ELECMEC SUR FIXING GR.



Product code:

SUCAEMDEW

Description:

ACC. ELECMEC SUR FIXING WH.



Product code:

SUCAEMFA1000NG

SUCAEMFA4000NG

Description:

ACC. ELECMEC QUICK SUSP 1M GR.

ACC. ELECMEC QUICK SUSP 4M GR.



Product code:

SUCAEMFA1000NW
SUCAEMFA4000NW

Description:

ACC. ELECMEC QUICK SUSP 1M WH.
ACC. ELECMEC QUICK SUSP 4M WH.



Product code:

SUCARG0100G
SUCARG0250G
SUCARG0500G
SUCARG1000G

Description:

ACC. ELECMEC RIGID SUSP 100MM GR.
ACC. ELECMEC RIGID SUSP 250MM GR.
ACC. ELECMEC RIGID SUSP 500MM GR.
ACC. ELECMEC RIGID SUSP 1000MM GR.



Product code:

SUCARG0100W
SUCARG0250W
SUCARG0500W
SUCARG1000W

Description:

ACC. ELECMEC RIGID SUSP 100MM WH.
ACC. ELECMEC RIGID SUSP 250MM WH.
ACC. ELECMEC RIGID SUSP 500MM WH.
ACC. ELECMEC RIGID SUSP 1000MM WH.



Product code:

SUCAWI1000DG
SUCAWI4000DG

Description:

ACC. ELECMEC QUICK SUSP 1M 5P GR.
ACC. ELECMEC QUICK SUSP 4M 5P GR.



Product code:

SUCAWI1000DW
SUCAWI4000DW

Description:

ACC. ELECMEC QUICK SUSP 1M 5P WH.
ACC. ELECMEC QUICK SUSP 4M 5P WH.

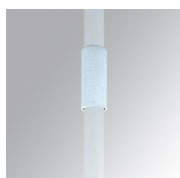


Product code:

SURG0100W
SURG0250W
SURG0500W
SURG1000W

Description:

ACC. RIGID SUSP 100MM WH.
ACC. RIGID SUSP 250MM WH.
ACC. RIGID SUSP 500MM WH.
ACC. RIGID SUSP 1000MM WH.



Product code:

SURGJO41W

Description:

ACC. RIGID SUSP FIXING JOINT WH.



Product code:

SUWIDE1000G
SUWIDE4000G

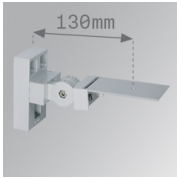
Description:

ACC. QUICK STEEL CABLE 1M NK.
ACC. QUICK STEEL CABLE 4M NK.

ACCESORIES :

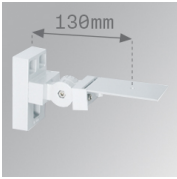
Support

FIL 50



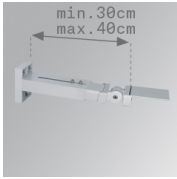
Product code:
ARRO13G

Description:
ACC. ADJ WALL ARM GR.



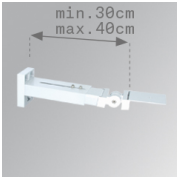
Product code:
ARRO13W

Description:
ACC. ADJ WALL ARM WH.



Product code:
ARROEX40G

Description:
ACC. ADJ EXTEN WALL ARM GR.



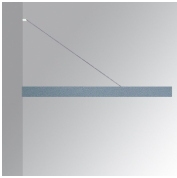
Product code:
ARROEX40W

Description:
ACC. ADJ EXTEN WALL ARM WH.



Product code:
F5FX75G
F5FX75W

Description:
ACC. WALL BRACKET 75MM GR.
ACC. WALL BRACKET 75MM WH.



Product code:
F5PRFXGR

Description:
FIL 50 ACC. PERP WALL BRACKET