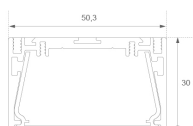
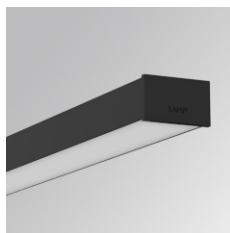


F51SL168MOOC840NB



FIL50 SLIM 1700 2600 NW COMF BK

Description:

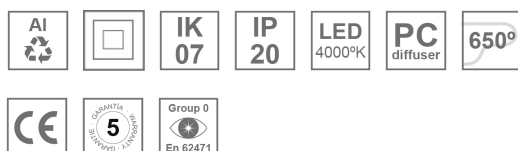
LAMP suspended or surface mounted structure FIL 50 SLIM 1680 2600. Manufactured from extruded aluminum with an 80% recycling rate, with an OPAL CONFORT diffuser made of a translucent polycarbonate diffuser and an optical film to achieve a controlled light distribution and low glare level, less than UGR 19. Model for LED MID-POWER, colour temperature 4000K and CRI80. Electronic ON OFF gear included. IP20 and IK07 ratings. Insulation Class II. Photobiological safety group 0. LED life time: 50.000 L90 B10 Available finishes: White and black.

Finish: Matte black RAL 9011

Dimensions: 1.700 x 50 x 30 mm

Installation: Surface
TECHNICAL SPECIFICATIONS:

Light output:	3.026 lm	°K :	4000
Plum:	30,8W	CRI :	80
Efficacy:	98,2 lm/w	MacAdam:	3
UGR:	<19	Power Supply:	220-240V 50/60Hz
Type:	MID POWER	Gear:	Electronic
LED Lifetime:	50.000 L90 B10 (Ta=25°C)		
Power:	18W		

Light output tolerance +/- 10%
**CUSTOM MADE OPTIONS:**

PHOTOMETRIC DATA :

