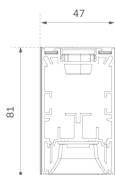


## F42SF112MOTE930DG



## - FIL45 G2 SUR 1120 2240 9WW TECH DALI GR

**Description:**

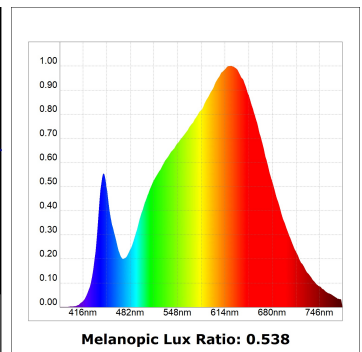
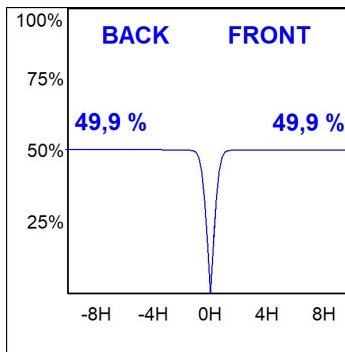
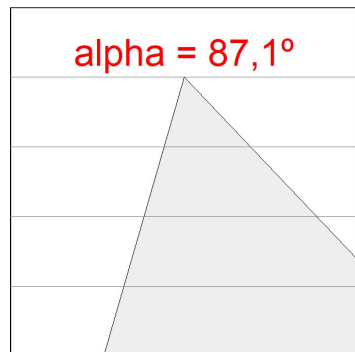
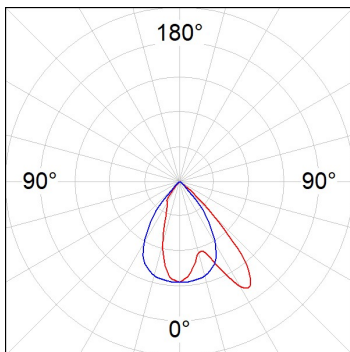
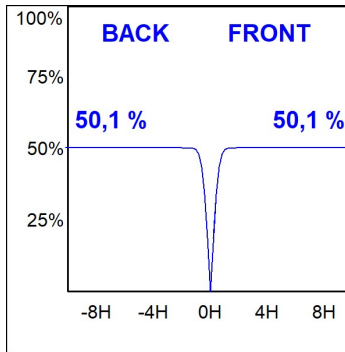
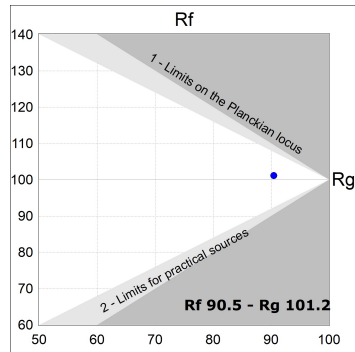
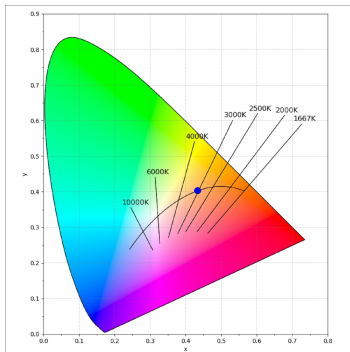
LAMP suspended or surface mounted structure FIL45 G2 SUR 1120. Manufactured from extruded aluminum with an 80% recycling rate, optic and black mat polycarbonate reflector TECH ULTRACONFORT to control light distribution and reduce glare UGR <15. Model for LED MID-POWER, colour temperature 3000K and IRC90. Electronic DALI gear included. IP20, IK07 ratings. Insulation Class I. Photobiological safety group 0. LED life time: 90.000 L80 B10. Available finishes: White, black and grey. Environmental Product Declaration - EPD@available, according to UNE-EN ISO 9001:2015 and UNE-EN ISO 14001:2015.

**Finition:** Gris satiné**Dimensions:** 1.118 x 45 x 80 mm**Poids:** 2.600 g**Installation:** Surface**SPÉCIFICATIONS TECHNIQUES:**

<b>Flux lumineux:</b>	1.746 lm	<b>°K :</b>	3000
<b>Plum:</b>	15,5W	<b>IRC :</b>	90
<b>Efficacité:</b>	112,7 lm/w	<b>R9 :</b>	71
<b>UGR:</b>	<15	<b>MacAdam:</b>	3
<b>Type:</b>	MID POWER	<b>Alimentation:</b>	220-240V 50/60Hz
<b>Durée de vie LED:</b>	90.000 L80 B10 (Ta=25°C)	<b>Équipement:</b>	Réglable DALI
<b>Puissance:</b>	13W		

*Tolérance de flux lumineux +/- 10%***OPTIONS PERSONNALISABLES:**

**DONNÉES PHOTOMÉTRIQUES :**



ACCESSOIRES :

Montage

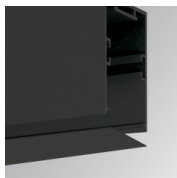


**Code produit:**

F42JO

**Description:**

FIL45 ACC. SU/RE INTM JOINT B

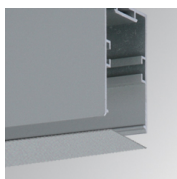


**Code produit:**

F4COX/MMB

**Description:**

FIL 45 ACC. COVER X/MM BK.



**Code produit:**

F4COX/MMG

**Description:**

FIL 45 ACC. COVER X/MM GR.



**Code produit:**

F4COX/MMW

**Description:**

FIL 45 ACC. COVER X/MM WH.



**Code produit:**

F4FX50B

**Description:**

ACC. WALL BRACKET FIL45 50MM BK.



**Code produit:**

F4FX50G

**Description:**

ACC. WALL BRACKET FIL45 50MM GR.

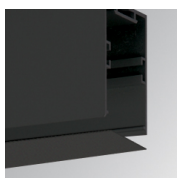


**Code produit:**

F4FX50W

**Description:**

ACC. WALL BRACKET FIL45 50MM WH.

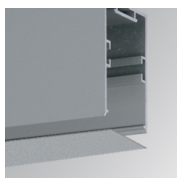


**Code produit:**

F4PRSUX/MMB

**Description:**

FIL 45 ACC. SUS PROFIL X/MM BK.

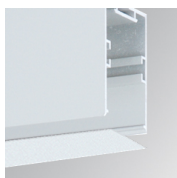


**Code produit:**

F4PRSUX/MMG

**Description:**

FIL 45 ACC. SUS PROFIL X/MM GR.

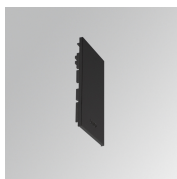


**Code produit:**

F4PRSUX/MMW

**Description:**

FIL 45 ACC. SUS PROFIL X/MM WH.



**Code produit:**  
F4SUECB

**Description:**  
FIL45 ACC. SUR END COVER BK.



**Code produit:**  
F4SUECG

**Description:**  
FIL45 ACC. SUR END COVER GR.



**Code produit:**  
F4SUECW

**Description:**  
FIL45 ACC. SUR END COVER WH.

**ACCESSOIRES :**

**Suspension**



**Code produit:**  
F4SUCAEMFA1000NB  
F4SUCAEMFA4000NB

**Description:**  
ACC. ELECMEC FIL45 QUICK SUSP 1M BK.  
ACC. ELECMEC FIL45 QUICK SUSP 4M BK.



**Code produit:**  
F4SUCAEMFA1000NG  
F4SUCAEMFA4000NG

**Description:**  
ACC. ELECMEC FIL45 QUICK SUSP 1M GR.  
ACC. ELECMEC FIL45 QUICK SUSP 4M GR.



**Code produit:**  
F4SUCAEMFA1000NW  
F4SUCAEMFA4000NW

**Description:**  
ACC. ELECMEC FIL45 QUICK SUSP 1M WH.  
ACC. ELECMEC FIL45 QUICK SUSP 4M WH.



**Code produit:**  
F4SUCAWI1000DB  
F4SUCAWI4000DB

**Description:**  
ACC. ELECMEC FIL45 QUICK SUSP 1M 5P BK.  
ACC. ELECMEC FIL45 QUICK SUSP 4M 5P BK.



**Code produit:**  
F4SUCAWI1000DG  
F4SUCAWI4000DG

**Description:**  
ACC. ELECMEC FIL45 QUICK SUSP 1M 5P GR.  
ACC. ELECMEC FIL45 QUICK SUSP 4M 5P GR.



**Code produit:**  
F4SUCAWI1000DW  
F4SUCAWI4000DW

**Description:**  
ACC. ELECMEC FIL45 QUICK SUSP 1M 5P WH.  
ACC. ELECMEC FIL45 QUICK SUSP 4M 5P WH.



**Code produit:**

F4SUWIDE1000G

**Description:**

FIL45 ACC. QUICK STEEL CABLE 1M NK.



**Code produit:**

F4SUWIDE4000G

**Description:**

FIL45 ACC. QUICK STEEL CABLE 4M NK.

---

**ACCESSOIRES :**

**Support**



**Code produit:**

F4FX15G

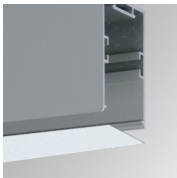
**Description:**

FIL45 ACC. CEILING BRACKET 15MM GR.

---

**ACCESSOIRES :**

**Optique**



**Code produit:**

F4DIX/MMOP

**Description:**

FIL 45 ACC. OPAL DIFFUSER X/MM

---

**ACCESSOIRES :**

**Contrôle et réglage**



**Code produit:**

F41EMG3HDWB

**Description:**

ACC.FIL45 DOWNLIGHT EMERGENCIA 3H BK



**Code produit:**

F41EMG3HDWG

**Description:**

ACC.FIL45 DOWNLIGHT EMERGENCIA 3H GR

FIL45



**Code produit:**

F41EMG3HDWW

**Description:**

ACC.FIL45 DOWNLIGHT EMERGENCIA 3H WH

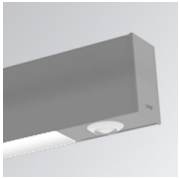


**Code produit:**

F41LIGHTSNDB

**Description:**

ACC.FIL45 SENSOR BASIC ILD DALI-2 BK



**Code produit:**

F41LIGHTSNDG

**Description:**

ACC.FIL45 SENSOR BASIC ILD DALI-2 GR



**Code produit:**

F41LIGHTSNDW

**Description:**

ACC.FIL45 SENSOR BASIC ILD DALI-2 WH