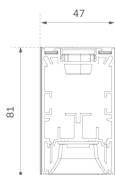


F42SF084MOTA940NW

**FIL45 G2 SUR 840 1680 9NW TECH ASY WH****Description:**

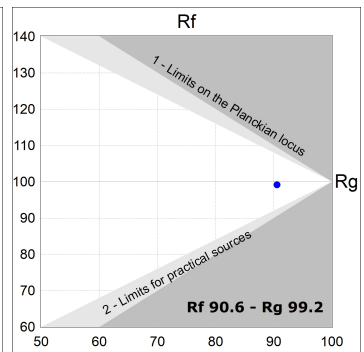
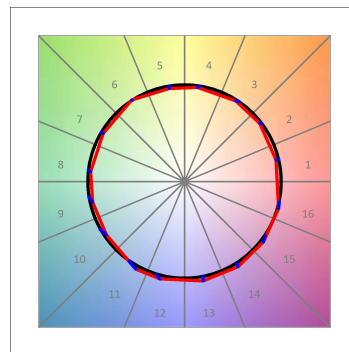
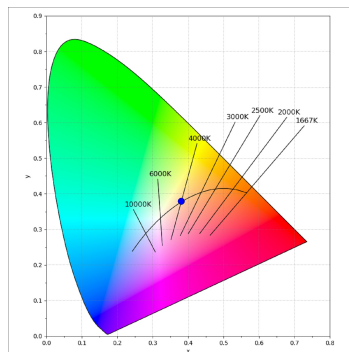
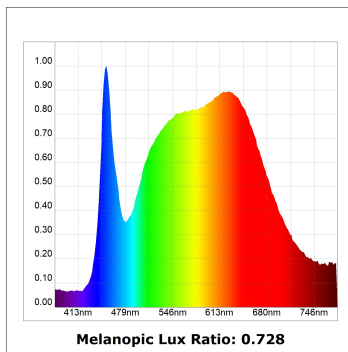
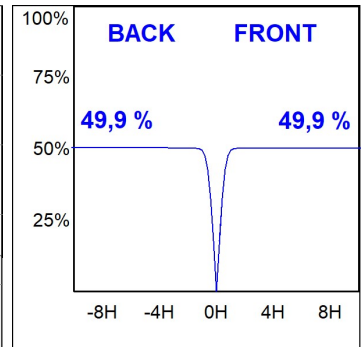
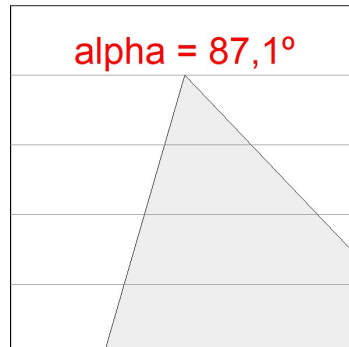
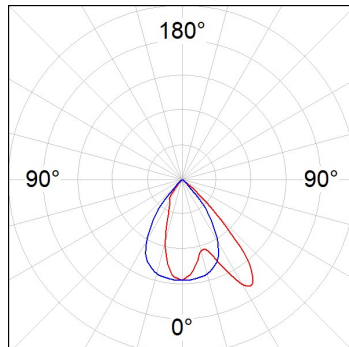
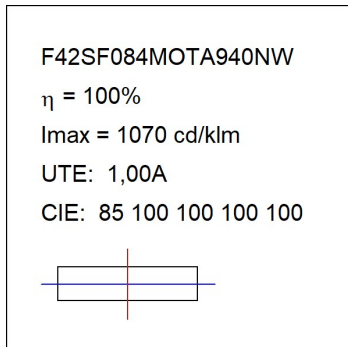
LAMP suspended or surface mounted structure FIL45 G2 SUR 840 . Manufactured from extruded aluminum with an 80% recycling rate, asymmetrical optic and black mat polycarbonate reflector TECH ULTRACONFORT to control light distribution and reduce glare UGR <15. Model for LED MID-POWER, colour temperature 4000K and IRC90. Electronic ON OFF gear included. IP20, IK07 ratings. Insulation Class I. Photobiological safety group 0. LED life time: 90.000 L80 B10. Available finishes: White, black and grey. Environmental Product Declaration - EPD@available, according to UNE-EN ISO 9001:2015 and UNE-EN ISO 14001:2015.

Finition: Blanc mat RAL 9010**Dimensions:** 838 x 45 x 80 mm**Poids:** 1.980 g**Installation:** Surface**SPÉCIFICATIONS TECHNIQUES:**

Flux lumineux:	1.122 lm	°K :	4000
Plum:	12,20W	IRC :	90
Efficacité:	92 lm/w	R9 :	67
Type:	MID POWER	MacAdam:	3
Durée de vie LED:	90.000 L80 B10 (Ta=25°C)	Alimentation:	220-240V 50/60Hz
Puissance:	10W	Équipement:	Électronique

Tolérance de flux lumineux +/- 10%**OPTIONS PERSONNALISABLES:**

DONNÉES PHOTOMÉTRIQUES :



ACCESSOIRES :

Montage

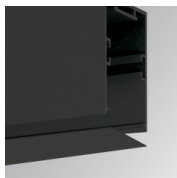


Code produit:

F42JO

Description:

FIL45 ACC. SU/RE INTM JOINT B

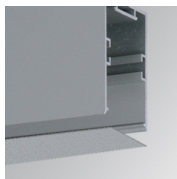


Code produit:

F4COX/MMB

Description:

FIL 45 ACC. COVER X/MM BK.

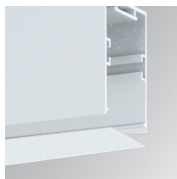


Code produit:

F4COX/MMG

Description:

FIL 45 ACC. COVER X/MM GR.



Code produit:

F4COX/MMW

Description:

FIL 45 ACC. COVER X/MM WH.



Code produit:

F4FX50B

Description:

ACC. WALL BRACKET FIL45 50MM BK.



Code produit:

F4FX50G

Description:

ACC. WALL BRACKET FIL45 50MM GR.

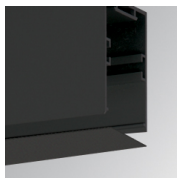


Code produit:

F4FX50W

Description:

ACC. WALL BRACKET FIL45 50MM WH.

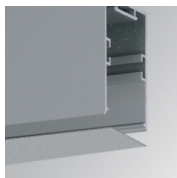


Code produit:

F4PRSUX/MMB

Description:

FIL 45 ACC. SUS PROFIL X/MM BK.



Code produit:

F4PRSUX/MMG

Description:

FIL 45 ACC. SUS PROFIL X/MM GR.

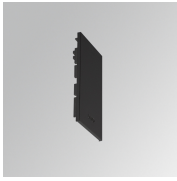


Code produit:

F4PRSUX/MMW

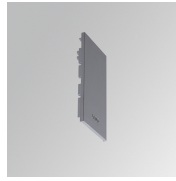
Description:

FIL 45 ACC. SUS PROFIL X/MM WH.



Code produit:
F4SUECB

Description:
FIL45 ACC. SUR END COVER BK.



Code produit:
F4SUECG

Description:
FIL45 ACC. SUR END COVER GR.



Code produit:
F4SUECW

Description:
FIL45 ACC. SUR END COVER WH.

ACCESSOIRES :

Suspension



Code produit:
F4SUCAEMFA1000NB
F4SUCAEMFA4000NB

Description:
ACC. ELECMEC FIL45 QUICK SUSP 1M BK.
ACC. ELECMEC FIL45 QUICK SUSP 4M BK.



Code produit:
F4SUCAEMFA1000NG
F4SUCAEMFA4000NG

Description:
ACC. ELECMEC FIL45 QUICK SUSP 1M GR.
ACC. ELECMEC FIL45 QUICK SUSP 4M GR.



Code produit:
F4SUCAEMFA1000NW
F4SUCAEMFA4000NW

Description:
ACC. ELECMEC FIL45 QUICK SUSP 1M WH.
ACC. ELECMEC FIL45 QUICK SUSP 4M WH.



Code produit:
F4SUCAWI1000DB
F4SUCAWI4000DB

Description:
ACC. ELECMEC FIL45 QUICK SUSP 1M 5P BK.
ACC. ELECMEC FIL45 QUICK SUSP 4M 5P BK.



Code produit:
F4SUCAWI1000DG
F4SUCAWI4000DG

Description:
ACC. ELECMEC FIL45 QUICK SUSP 1M 5P GR.
ACC. ELECMEC FIL45 QUICK SUSP 4M 5P GR.



Code produit:
F4SUCAWI1000DW
F4SUCAWI4000DW

Description:
ACC. ELECMEC FIL45 QUICK SUSP 1M 5P WH.
ACC. ELECMEC FIL45 QUICK SUSP 4M 5P WH.



Code produit:

F4SUWIDE1000G

Description:

FIL45 ACC. QUICK STEEL CABLE 1M NK.



Code produit:

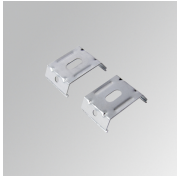
F4SUWIDE4000G

Description:

FIL45 ACC. QUICK STEEL CABLE 4M NK.

ACCESSOIRES :

Support



Code produit:

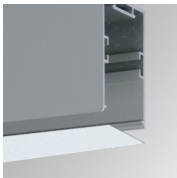
F4FX15G

Description:

FIL45 ACC. CEILING BRACKET 15MM GR.

ACCESSOIRES :

Optique



Code produit:

F4DIX/MMOP

Description:

FIL 45 ACC. OPAL DIFFUSER X/MM

ACCESSOIRES :

Contrôle et réglage



Code produit:

F41EMG3HDWB

Description:

ACC.FIL45 DOWNLIGHT EMERGENCIA 3H BK



Code produit:

F41EMG3HDWG

Description:

ACC.FIL45 DOWNLIGHT EMERGENCIA 3H GR



Code produit:

F41EMG3HDWW

Description:

ACC.FIL45 DOWNLIGHT EMERGENCIA 3H WH

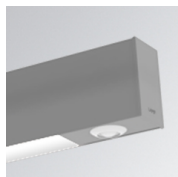


Code produit:

F41LIGHTSNDB

Description:

ACC.FIL45 SENSOR BASIC ILD DALI-2 BK



Code produit:

F41LIGHTSNDG

Description:

ACC.FIL45 SENSOR BASIC ILD DALI-2 GR



Code produit:

F41LIGHTSNDW

Description:

ACC.FIL45 SENSOR BASIC ILD DALI-2 WH