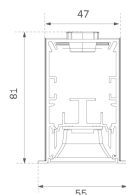


## F42RE224MOTe930DB



## FIL45 G2 REC 2240 4480 9WW TECH DALI BK

## Description:

LAMP recessed structure FIL45 G2 REC 2240. Manufactured from extruded aluminum with an 80% recycling rate, optic and black mat polycarbonate reflector TECH ULTRACONFORT to control light distribution and reduce glare UGR <15. Model for LED MID-POWER, colour temperature 3000K and IRC90. Electronic DALI gear included. IP20, IK07 ratings. Insulation Class I. Photobiological safety group 0. LED life time: 90.000 L80 B10. Available finishes: White, black and grey. Environmental Product Declaration - EPD@available, according to UNE-EN ISO 9001:2015 and UNE-EN ISO 14001:2015.

**Finish:** Matte black RAL 9011

**Dimensions:** 2.238 x 55 x 76 mm

**Weight:** 5.360 g

**Installation:** Recessed

**Recessing measures:** 2,246 x 51 x 0 mm

## TECHNICAL SPECIFICATIONS:

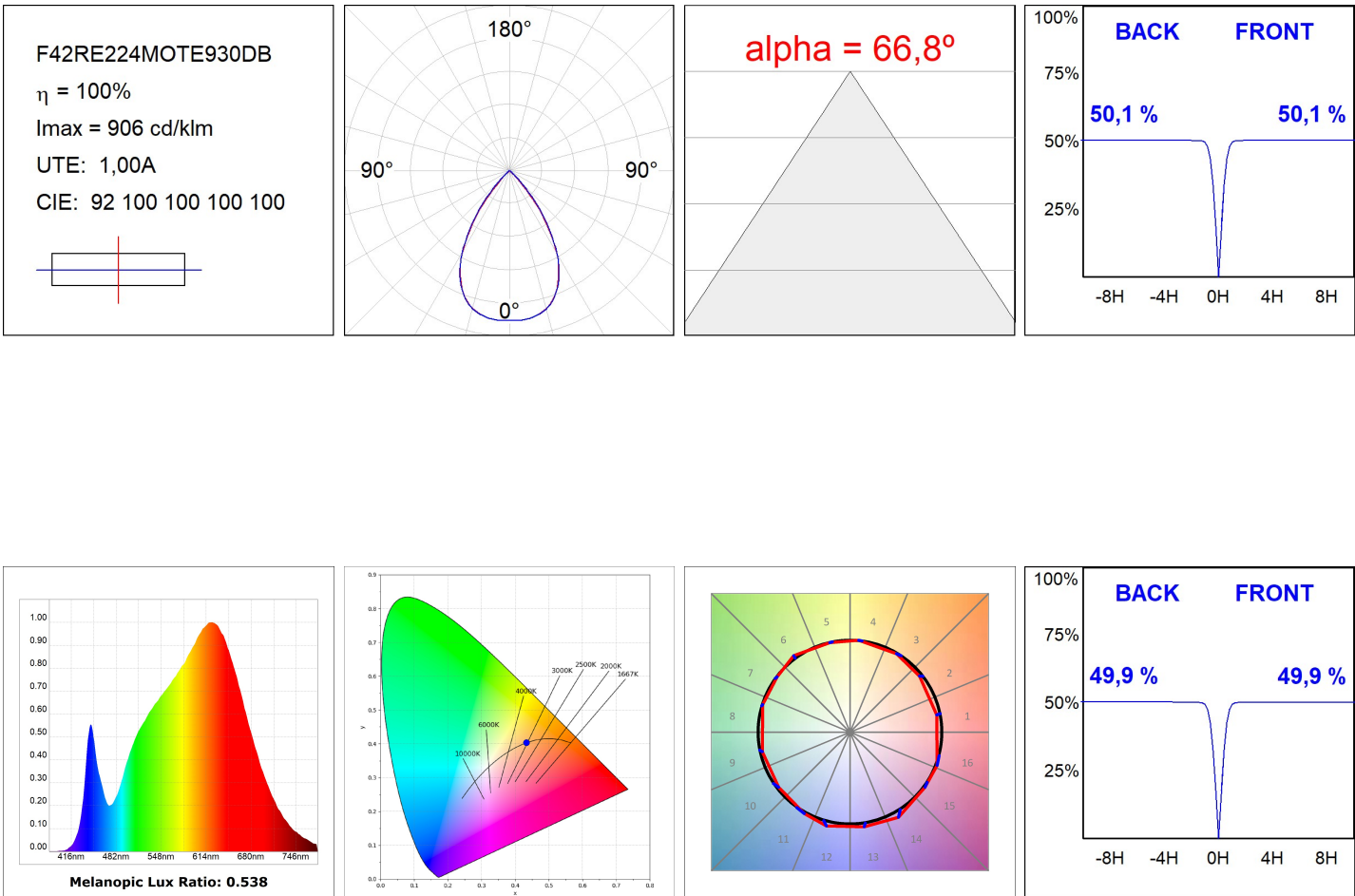
<b>Light output:</b>	3.493 lm	<b>°K :</b>	3000
<b>Plum:</b>	29,7W	<b>CRI :</b>	90
<b>Efficacy:</b>	117,6 lm/w	<b>R9 :</b>	71
<b>UGR:</b>	<15	<b>MacAdam:</b>	3
<b>Type:</b>	MID POWER	<b>Power Supply:</b>	220-240V 50/60Hz
<b>LED Lifetime:</b>	90.000 L80 B10 (Ta=25°C)	<b>Gear:</b>	Adjustable DALI
<b>Power:</b>	26W		

*Light output tolerance +/- 10%*


## CUSTOM MADE OPTIONS:



PHOTOMETRIC DATA :



## ACCESSORIES :

## Assembly

**Product code:**

F42JO

**Description:**

FIL45 ACC. SU/RE INTM JOINT B

**Product code:**

F4COX/MMB

**Description:**

FIL 45 ACC. COVER X/MM BK.

**Product code:**

F4COX/MMG

**Description:**

FIL 45 ACC. COVER X/MM GR.

**Product code:**

F4COX/MMW

**Description:**

FIL 45 ACC. COVER X/MM WH.

**Product code:**

F4PRREX/MMB

**Description:**

FIL 45 ACC. REC PROFIL X/MM BK.

**Product code:**

F4PRREX/MMG

**Description:**

FIL 45 ACC. REC PROFIL X/MM GR.

**Product code:**

F4PRREX/MMW

**Description:**

FIL 45 ACC. REC PROFIL X/MM WH.

**Product code:**

F4REECB

**Description:**

FIL45 ACC. REC END COVER BK.

**Product code:**

F4REECG

**Description:**

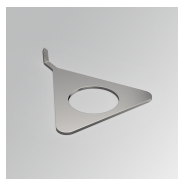
FIL45 ACC. REC END COVER GR.

**Product code:**

F4REECW

**Description:**

FIL45 ACC. REC END COVER WH.



**Product code:**

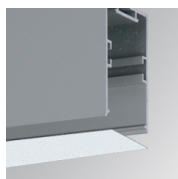
F4TORFG

**Description:**

FIL45 ACC. TOOL REMOVE REFLECTOR

## ACCESORIES :

### Optical



**Product code:**

F4DIX/MMOP

**Description:**

FIL 45 ACC. OPAL DIFFUSER X/MM

## ACCESORIES :

### Adjustment and control



**Product code:**

F41EMG3HDWB

**Description:**

ACC.FIL45 DOWNLIGHT EMERGENCIA 3H BK



**Product code:**

F41EMG3HDWG

**Description:**

ACC.FIL45 DOWNLIGHT EMERGENCIA 3H GR



**Product code:**

F41EMG3HDWW

**Description:**

ACC.FIL45 DOWNLIGHT EMERGENCIA 3H WH

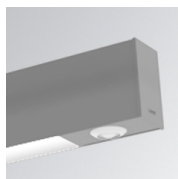


**Product code:**

F41LIGHTSNDB

**Description:**

ACC.FIL45 SENSOR BASIC ILD DALI-2 BK



**Product code:**

F41LIGHTSNDG

**Description:**

ACC.FIL45 SENSOR BASIC ILD DALI-2 GR



**Product code:**

F41LIGHTSNDW

**Description:**

ACC.FIL45 SENSOR BASIC ILD DALI-2 WH