

## F42RE196MOTE940DG



## - FIL45 G2 REC 1960 3920 9NW TECH DALI GR

**Description:**

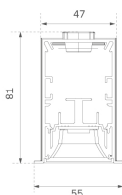
LAMP recessed structure FIL45 G2 REC 1960. Manufactured from extruded aluminum with an 80% recycling rate, optic and black mat polycarbonate reflector TECH ULTRACONFORT to control light distribution and reduce glare UGR <15. Model for LED MID-POWER, colour temperature 4000K and IRC90. Electronic DALI gear included. IP20, IK07 ratings. Insulation Class I. Photobiological safety group 0. LED life time: 90.000 L80 B10. Available finishes: White, black and grey. Environmental Product Declaration - EPD@available, according to UNE-EN ISO 9001:2015 and UNE-EN ISO 14001:2015.

**Finition:** Gris satiné

**Dimensions:** 1.958 x 55 x 76 mm

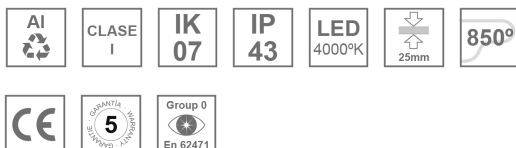
**Installation:** Encastré

**Mesures encastrement:** 1,966 x 51 x 0 mm

**SPÉCIFICATIONS TECHNIQUES:**


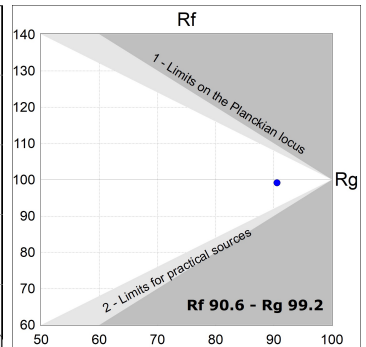
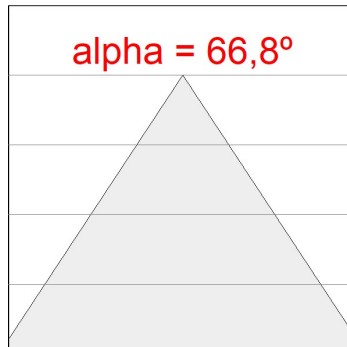
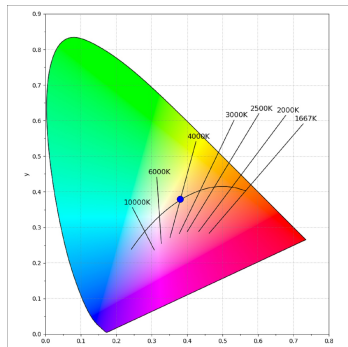
<b>Flux lumineux:</b>	3.200 lm	<b>°K :</b>	4000
<b>Plum:</b>	26W	<b>IRC :</b>	90
<b>Efficacité:</b>	123,1 lm/w	<b>R9 :</b>	67
<b>UGR:</b>	<15	<b>MacAdam:</b>	3
<b>Type:</b>	MID POWER	<b>Alimentation:</b>	220-240V 50/60Hz
<b>Durée de vie LED:</b>	90.000 L80 B10 (Ta=25°C)	<b>Équipement:</b>	Réglable DALI
<b>Puissance:</b>	23W		

*Tolérance de flux lumineux +/- 10%*


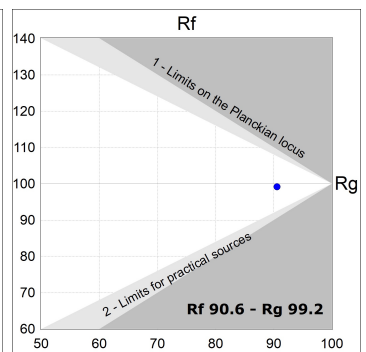
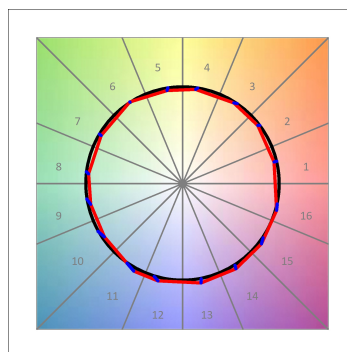
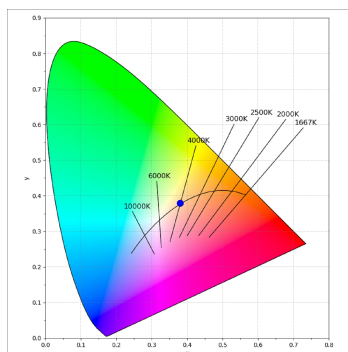
**OPTIONS PERSONNALISABLES:**

**DONNÉES PHOTOMÉTRIQUES :**

F42RE196MOTE940DG  
 $\eta = 100\%$   
 $I_{max} = 906 \text{ cd/klm}$   
 UTE: 1,00A  
 CIE: 92 100 100 100 100

F42SF224MOTA940DW  
 $\eta = 100\%$   
 $I_{max} = 1070 \text{ cd/klm}$   
 UTE: 1,00A  
 CIE: 85 100 100 100 100

ACCESSOIRES :

Montage

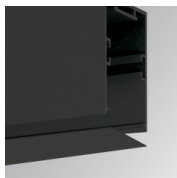


**Code produit:**

F42JO

**Description:**

FIL45 ACC. SU/RE INTM JOINT B

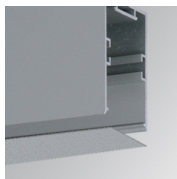


**Code produit:**

F4COX/MMB

**Description:**

FIL 45 ACC. COVER X/MM BK.

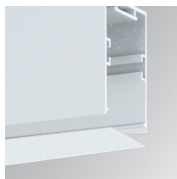


**Code produit:**

F4COX/MMG

**Description:**

FIL 45 ACC. COVER X/MM GR.



**Code produit:**

F4COX/MMW

**Description:**

FIL 45 ACC. COVER X/MM WH.

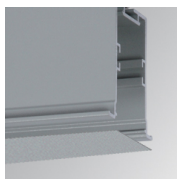


**Code produit:**

F4PRREX/MMB

**Description:**

FIL 45 ACC. REC PROFIL X/MM BK.

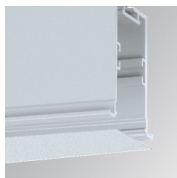


**Code produit:**

F4PRREX/MMG

**Description:**

FIL 45 ACC. REC PROFIL X/MM GR.

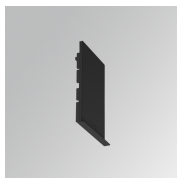


**Code produit:**

F4PRREX/MMW

**Description:**

FIL 45 ACC. REC PROFIL X/MM WH.



**Code produit:**

F4REECB

**Description:**

FIL45 ACC. REC END COVER BK.



**Code produit:**

F4REECG

**Description:**

FIL45 ACC. REC END COVER GR.

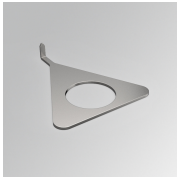


**Code produit:**

F4REECW

**Description:**

FIL45 ACC. REC END COVER WH.



**Code produit:**

F4TORFG

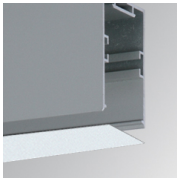
**Description:**

FIL45 ACC. TOOL REMOVE REFLECTOR

---

**ACCESSOIRES :**

**Optique**



**Code produit:**

F4DIX/MMOP

**Description:**

FIL 45 ACC. OPAL DIFFUSER X/MM

---

**ACCESSOIRES :**

**Contrôle et réglage**



**Code produit:**

F41EMG3HDWB

**Description:**

ACC.FIL45 DOWNLIGHT EMERGENCIA 3H BK



**Code produit:**

F41EMG3HDWG

**Description:**

ACC.FIL45 DOWNLIGHT EMERGENCIA 3H GR



**Code produit:**

F41EMG3HDWW

**Description:**

ACC.FIL45 DOWNLIGHT EMERGENCIA 3H WH

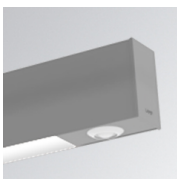


**Code produit:**

F41LIGHTSNDB

**Description:**

ACC.FIL45 SENSOR BASIC ILD DALI-2 BK



**Code produit:**

F41LIGHTSNDG

**Description:**

ACC.FIL45 SENSOR BASIC ILD DALI-2 GR



**Code produit:**

F41LIGHTSNDW

**Description:**

ACC.FIL45 SENSOR BASIC ILD DALI-2 WH