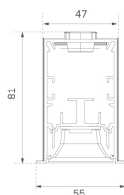


F42RE084MOTE930NW



FIL45 G2 REC 840 1680 9WW TECH WH

**Description:**

LAMP suspended or surface mounted structure FIL45 G2 REC 840. Manufactured from extruded aluminum with an 80% recycling rate, optic and black mat polycarbonate reflector TECH ULTRACONFORT to control light distribution and reduce glare UGR <15. Model for LED MID-POWER, colour temperature 3000K and IRC90. Electronic ON OFF gear included. IP20, IK07 ratings. Insulation Class I. Photobiological safety group 0. LED life time: 90.000 L80 B10. Available finishes: White, black and grey. Environmental Product Declaration - EPD@available, according to UNE-EN ISO 9001:2015 and UNE-EN ISO 14001:2015.

**Finish:** Matte white RAL 9010

**Dimensions:** 838 x 55 x 76 mm

**Weight:** 2.130 g

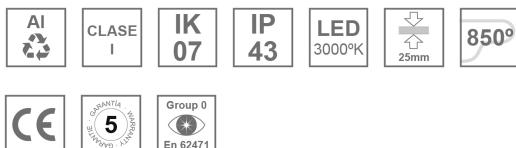
**Installation:** Recessed

**Recessing measures:** 846 x 51 x 0 mm

**TECHNICAL SPECIFICATIONS:**

<b>Light output:</b>	1.310 lm	<b>°K :</b>	3000
<b>Plum:</b>	12,2W	<b>CRI :</b>	90
<b>Efficacy:</b>	107,4 lm/w	<b>R9 :</b>	71
<b>UGR:</b>	<15	<b>MacAdam:</b>	3
<b>Type:</b>	MID POWER	<b>Power Supply:</b>	220-240V 50/60Hz
<b>LED Lifetime:</b>	90.000 L80 B10 (Ta=25°C)	<b>Gear:</b>	Electronic
<b>Power:</b>	10W		

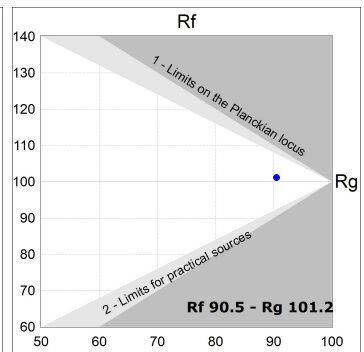
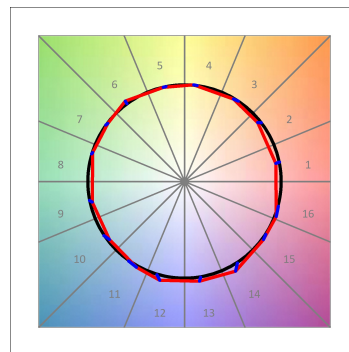
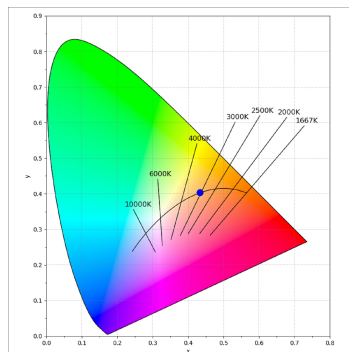
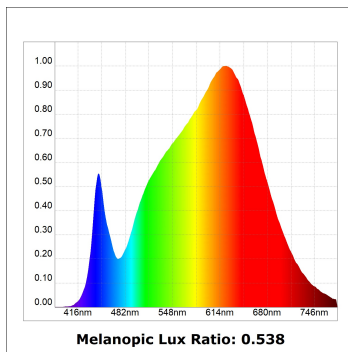
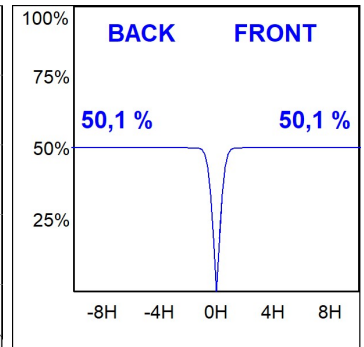
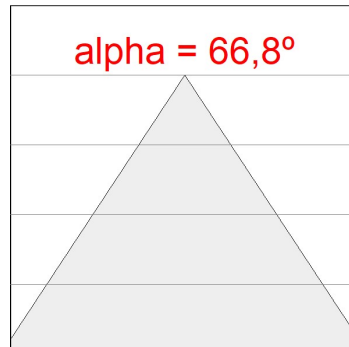
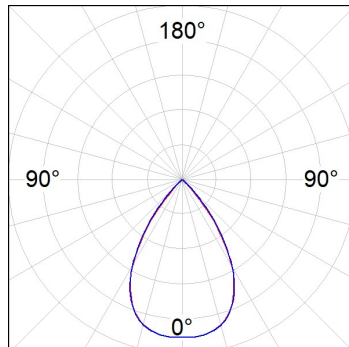
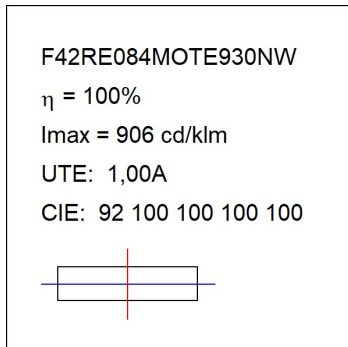
*Light output tolerance +/- 10%*



**CUSTOM MADE OPTIONS:**



PHOTOMETRIC DATA :



ACCESORIES :

Assembly



**Product code:**

F42JO

**Description:**

FIL45 ACC. SU/RE INTM JOINT B

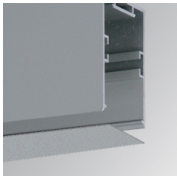


**Product code:**

F4COX/MMB

**Description:**

FIL 45 ACC. COVER X/MM BK.

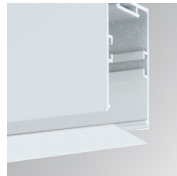


**Product code:**

F4COX/MMG

**Description:**

FIL 45 ACC. COVER X/MM GR.



**Product code:**

F4COX/MMW

**Description:**

FIL 45 ACC. COVER X/MM WH.

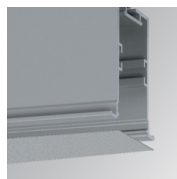


**Product code:**

F4PRREX/MMB

**Description:**

FIL 45 ACC. REC PROFIL X/MM BK.

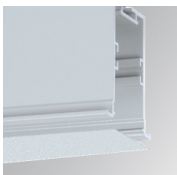


**Product code:**

F4PRREX/MMG

**Description:**

FIL 45 ACC. REC PROFIL X/MM GR.

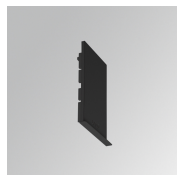


**Product code:**

F4PRREX/MMW

**Description:**

FIL 45 ACC. REC PROFIL X/MM WH.



**Product code:**

F4REECB

**Description:**

FIL45 ACC. REC END COVER BK.



**Product code:**

F4REECG

**Description:**

FIL45 ACC. REC END COVER GR.

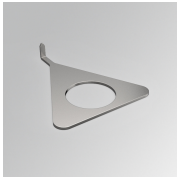


**Product code:**

F4REECW

**Description:**

FIL45 ACC. REC END COVER WH.



**Product code:**

F4TORFG

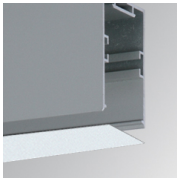
**Description:**

FIL45 ACC. TOOL REMOVE REFLECTOR

---

**ACCESORIES :**

**Optical**



**Product code:**

F4DIX/MMOP

**Description:**

FIL 45 ACC. OPAL DIFFUSER X/MM

---

**ACCESORIES :**

**Adjustment and control**



**Product code:**

F41EMG3HDWB

**Description:**

ACC.FIL45 DOWNLIGHT EMERGENCIA 3H BK



**Product code:**

F41EMG3HDWG

**Description:**

ACC.FIL45 DOWNLIGHT EMERGENCIA 3H GR



**Product code:**

F41EMG3HDWW

**Description:**

ACC.FIL45 DOWNLIGHT EMERGENCIA 3H WH

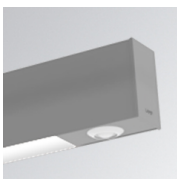


**Product code:**

F41LIGHTSNDB

**Description:**

ACC.FIL45 SENSOR BASIC ILD DALI-2 BK



**Product code:**

F41LIGHTSNDG

**Description:**

ACC.FIL45 SENSOR BASIC ILD DALI-2 GR



**Product code:**

F41LIGHTSNDW

**Description:**

ACC.FIL45 SENSOR BASIC ILD DALI-2 WH