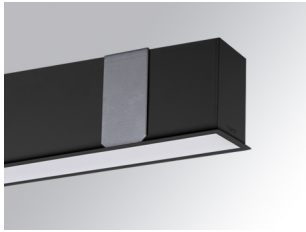


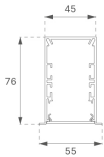
F41RE168MOPRWB3NB

- FIL45 REC 1680 3600 WBW OP COMF BK.



Description:

Finish: Matte black RAL 9011
Dimensions: 1.680 x 55 x 76 mm



Installation: Recessed

Recessing measures: 1,686 x 51 x 0 mm

TECHNICAL SPECIFICATIONS:

UGR:	<16	°K :	3000
		MacAdam:	3
		Power Supply:	220-240V 50/60Hz
		Gear:	Electronic

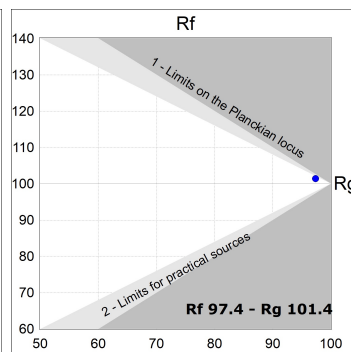
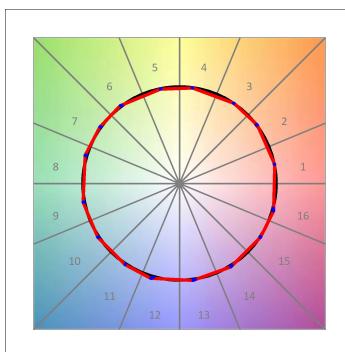
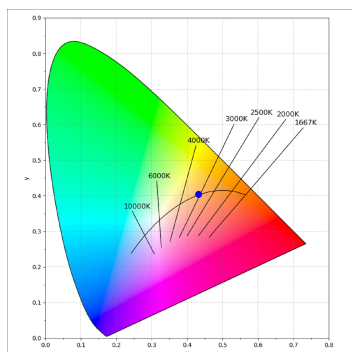
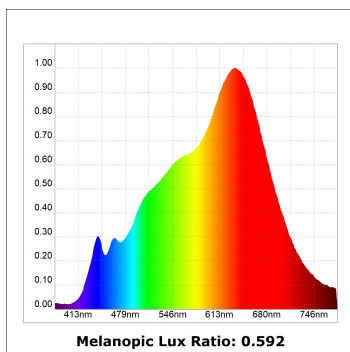
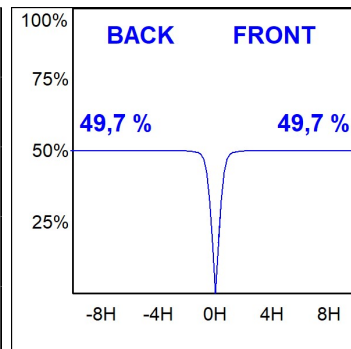
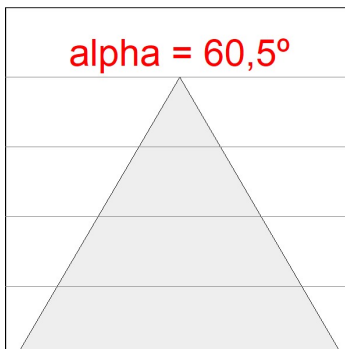
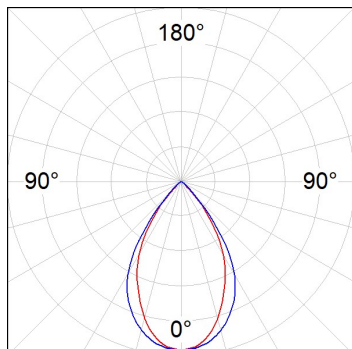


CUSTOM MADE OPTIONS:



PHOTOMETRIC DATA :

F41RE168MOPRWB3NB
 $\eta = 99\%$
 $I_{max} = 968 \text{ cd/klm}$
 UTE: 0,99A
 CIE: 90 100 100 100 99



ACCESORIES :

Assembly



Product code:
F4COX/MMB

Description:
FIL 45 ACC. COVER X/MM BK.



Product code:
F4COX/MMG

Description:
FIL 45 ACC. COVER X/MM GR.



Product code:
F4COX/MMW

Description:
FIL 45 ACC. COVER X/MM WH.



Product code:
F4PRREX/MMB

Description:
FIL 45 ACC. REC PROFIL X/MM BK.



Product code:
F4PRREX/MMG

Description:
FIL 45 ACC. REC PROFIL X/MM GR.



Product code:
F4PRREX/MMW

Description:
FIL 45 ACC. REC PROFIL X/MM WH.



Product code:
F4REECB

Description:
FIL45 ACC. REC END COVER BK.



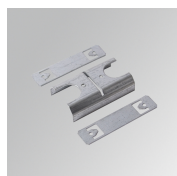
Product code:
F4REECG

Description:
FIL45 ACC. REC END COVER GR.



Product code:
F4REECW

Description:
FIL45 ACC. REC END COVER WH.



Product code:
F4REJO

Description:
FIL45 ACC. INTM JOINT B RECESSED



Product code:

F4TORFG

Description:

FIL45 ACC. TOOL REMOVE REFLECTOR

ACCESORIES :

Optical



Product code:

F4DIX/MMOP

Description:

FIL 45 ACC. OPAL DIFFUSER X/MM

ACCESORIES :

Adjustment and control



Product code:

F41EMG3HDWB

Description:

ACC.FIL45 DOWNLIGHT EMERGENCIA 3H BK



Product code:

F41EMG3HDWG

Description:

ACC.FIL45 DOWNLIGHT EMERGENCIA 3H GR



Product code:

F41EMG3HDWW

Description:

ACC.FIL45 DOWNLIGHT EMERGENCIA 3H WH



Product code:

F41LIGHTSNDB

Description:

ACC.FIL45 SENSOR BASIC ILD DALI-2 BK



Product code:

F41LIGHTSNDG

Description:

ACC.FIL45 SENSOR BASIC ILD DALI-2 GR



Product code:

F41LIGHTSNDW

Description:

ACC.FIL45 SENSOR BASIC ILD DALI-2 WH