

F41RE112MOPRWB4DG

- FIL45 REC 1120 2400 WBN OP COMF DALI GR.



Description:

Finish: Gloss grey

Dimensions: 1.120 x 55 x 76 mm



Installation: Recessed

Recessing measures: 1,126 x 51 x 0 mm

TECHNICAL SPECIFICATIONS:

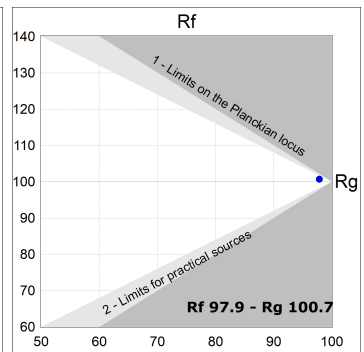
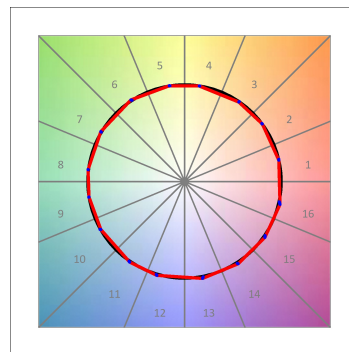
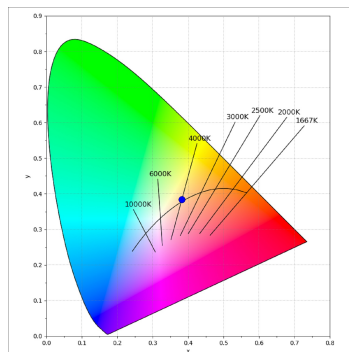
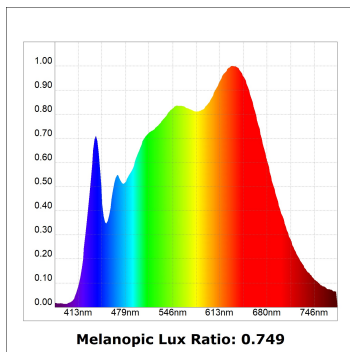
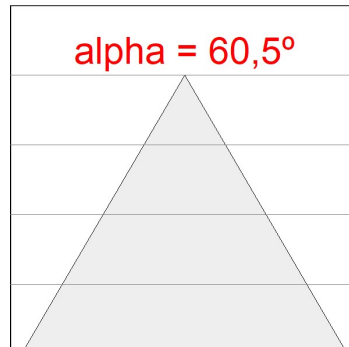
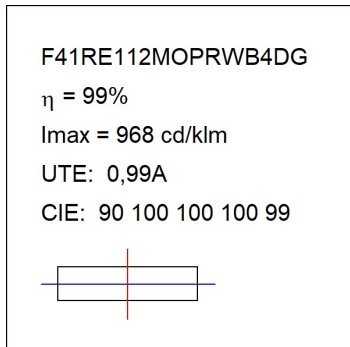
UGR:	<16	°K :	4000
		MacAdam:	3
		Power Supply:	220-240V 50/60Hz
		Gear:	Adjustable DALI



CUSTOM MADE OPTIONS:



PHOTOMETRIC DATA :



ACCESORIES :

Assembly



Product code:

F42JO

Description:

FIL45 ACC. SU/RE INTM JOINT B



Product code:

F4COX/MMB

Description:

FIL 45 ACC. COVER X/MM BK.

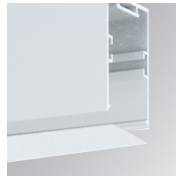


Product code:

F4COX/MMG

Description:

FIL 45 ACC. COVER X/MM GR.



Product code:

F4COX/MMW

Description:

FIL 45 ACC. COVER X/MM WH.

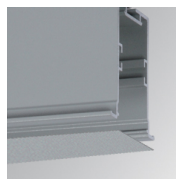


Product code:

F4PRREX/MMB

Description:

FIL 45 ACC. REC PROFIL X/MM BK.

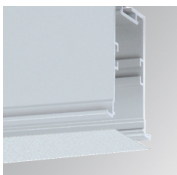


Product code:

F4PRREX/MMG

Description:

FIL 45 ACC. REC PROFIL X/MM GR.

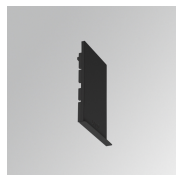


Product code:

F4PRREX/MMW

Description:

FIL 45 ACC. REC PROFIL X/MM WH.

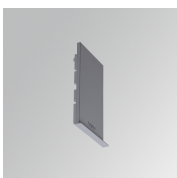


Product code:

F4REECB

Description:

FIL45 ACC. REC END COVER BK.



Product code:

F4REECG

Description:

FIL45 ACC. REC END COVER GR.

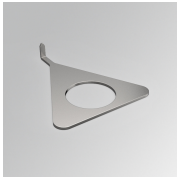


Product code:

F4REECW

Description:

FIL45 ACC. REC END COVER WH.



Product code:

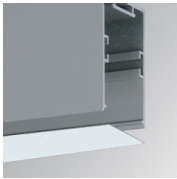
F4TORFG

Description:

FIL45 ACC. TOOL REMOVE REFLECTOR

ACCESSORIES :

Optical



Product code:

F4DIX/MMOP

Description:

FIL 45 ACC. OPAL DIFFUSER X/MM

ACCESSORIES :

Adjustment and control



Product code:

F41EMG3HDWB

Description:

ACC.FIL45 DOWNLIGHT EMERGENCIA 3H BK



Product code:

F41EMG3HDWG

Description:

ACC.FIL45 DOWNLIGHT EMERGENCIA 3H GR



Product code:

F41EMG3HDWW

Description:

ACC.FIL45 DOWNLIGHT EMERGENCIA 3H WH

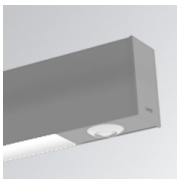


Product code:

F41LIGHTSNDB

Description:

ACC.FIL45 SENSOR BASIC ILD DALI-2 BK



Product code:

F41LIGHTSNDG

Description:

ACC.FIL45 SENSOR BASIC ILD DALI-2 GR



Product code:

F41LIGHTSNDW

Description:

ACC.FIL45 SENSOR BASIC ILD DALI-2 WH