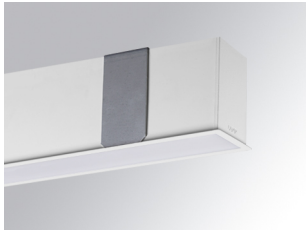


F41RE112MOPRWB3NW

- FIL45 REC 1120 2400 WBW OP COMF WH.



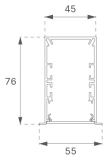
Description:

**Finition:** Blanc mat RAL 9010

**Dimensions:** 1.120 x 55 x 76 mm

**Installation:** Encastré

**Mesures encastrement:** 1,126 x 51 x 0 mm



SPÉCIFICATIONS TECHNIQUES:

<b>UGR:</b>	<16	<b>°K :</b>	3000
		<b>MacAdam:</b>	3
		<b>Alimentation:</b>	220-240V 50/60Hz
		<b>Équipement:</b>	Électronique


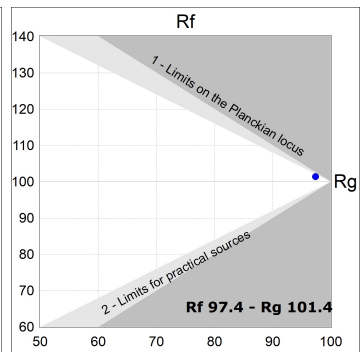
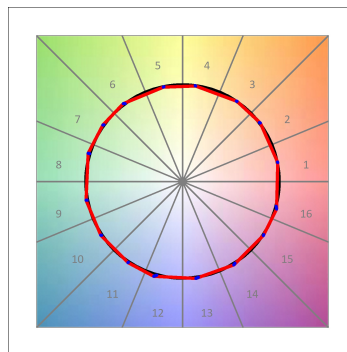
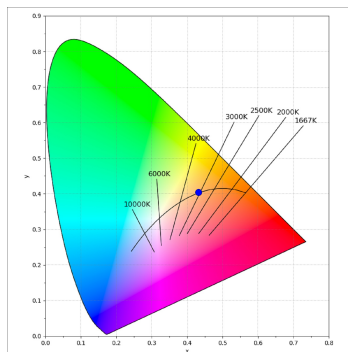
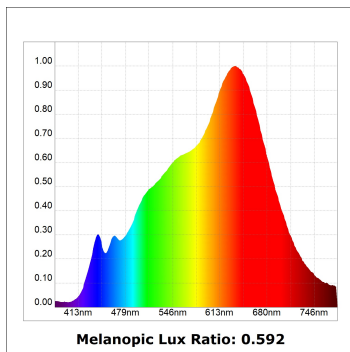
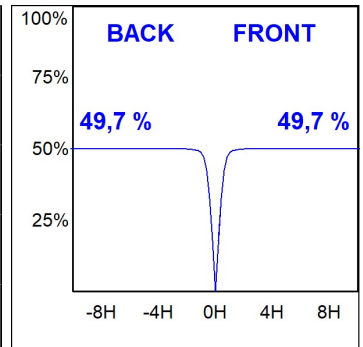
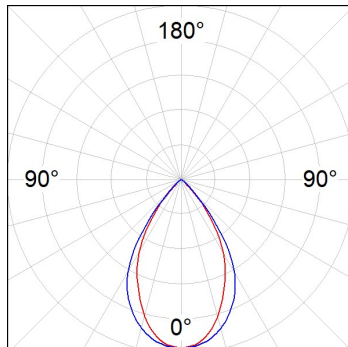


OPTIONS PERSONNALISABLES:



**DONNÉES PHOTOMÉTRIQUES :**

F41RE112MOPRWB3NW  
 $\eta = 99\%$   
 $I_{max} = 968 \text{ cd/klm}$   
 UTE: 0,99A  
 CIE: 90 100 100 100 99

ACCESSOIRES :

Montage



**Code produit:**  
F4COX/MMB

**Description:**  
FIL 45 ACC. COVER X/MM BK.



**Code produit:**  
F4COX/MMG

**Description:**  
FIL 45 ACC. COVER X/MM GR.



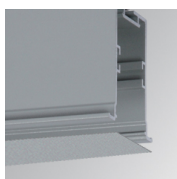
**Code produit:**  
F4COX/MMW

**Description:**  
FIL 45 ACC. COVER X/MM WH.



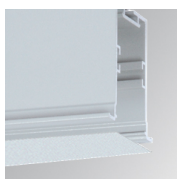
**Code produit:**  
F4PRREX/MMB

**Description:**  
FIL 45 ACC. REC PROFIL X/MM BK.



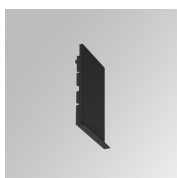
**Code produit:**  
F4PRREX/MMG

**Description:**  
FIL 45 ACC. REC PROFIL X/MM GR.



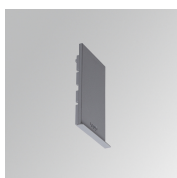
**Code produit:**  
F4PRREX/MMW

**Description:**  
FIL 45 ACC. REC PROFIL X/MM WH.



**Code produit:**  
F4REECB

**Description:**  
FIL45 ACC. REC END COVER BK.



**Code produit:**  
F4REECG

**Description:**  
FIL45 ACC. REC END COVER GR.



**Code produit:**  
F4REECW

**Description:**  
FIL45 ACC. REC END COVER WH.



**Code produit:**  
F4REJO

**Description:**  
FIL45 ACC. INTM JOINT B RECESSED



**Code produit:**

F4TORFG

**Description:**

FIL45 ACC. TOOL REMOVE REFLECTOR

---

**ACCESSOIRES :**

**Optique**



**Code produit:**

F4DIX/MMOP

**Description:**

FIL 45 ACC. OPAL DIFFUSER X/MM

---

**ACCESSOIRES :**

**Contrôle et réglage**



**Code produit:**

F41EMG3HDWB

**Description:**

ACC.FIL45 DOWNLIGHT EMERGENCIA 3H BK



**Code produit:**

F41EMG3HDWG

**Description:**

ACC.FIL45 DOWNLIGHT EMERGENCIA 3H GR



**Code produit:**

F41EMG3HDWW

**Description:**

ACC.FIL45 DOWNLIGHT EMERGENCIA 3H WH



**Code produit:**

F41LIGHTSNDB

**Description:**

ACC.FIL45 SENSOR BASIC ILD DALI-2 BK



**Code produit:**

F41LIGHTSNDG

**Description:**

ACC.FIL45 SENSOR BASIC ILD DALI-2 GR



**Code produit:**

F41LIGHTSNDW

**Description:**

ACC.FIL45 SENSOR BASIC ILD DALI-2 WH