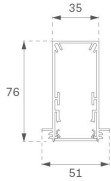


F31TR112MOOC830NW

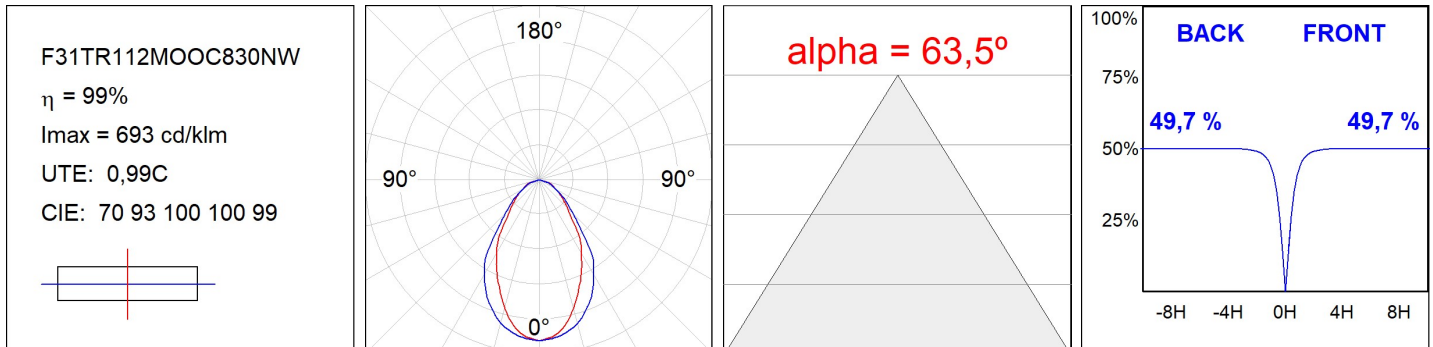
- FIL35 TRIM 1120 2960 WW OP COMF WH.

Description:**Finition:** Blanc mat RAL 9010**SPÉCIFICATIONS TECHNIQUES:**

| | | | |
|--------------------------|--------------------------|----------------------|------------------|
| Flux lumineux: | 1.571 lm | °K : | 3000 |
| Plum: | 18W | IRC : | 80 |
| Efficacité: | 87,3 lm/w | MacAdam: | 3 |
| UGR: | <19 | Alimentation: | 220-240V 50/60Hz |
| Type: | MID POWER LED | Équipement: | Électronique |
| Durée de vie LED: | 70.000 L80 B10 (Ta=25°C) | | |
| Puissance: | 16W | | |

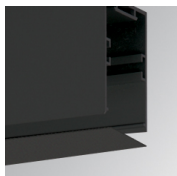
Tolérance de flux lumineux +/- 10%

DONNÉES PHOTOMÉTRIQUES :



ACCESSOIRES :

Montage

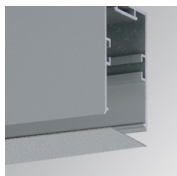


Code produit:

F3COX/MMB

Description:

FIL 35 ACC. COVER X/MM BK.

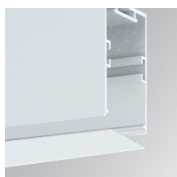


Code produit:

F3COX/MMG

Description:

FIL 35 ACC. COVER X/MM GR.



Code produit:

F3COX/MMW

Description:

FIL 35 ACC. COVER X/MM WH.