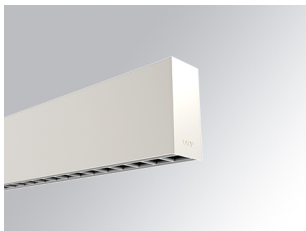


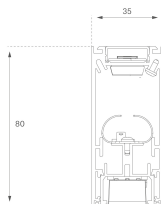
F31SF168MOTE930NW



- **FIL35 SUR 1680 4400 9WW TECH WH**

Description:

Surface-mounted structure for suspension or surface mounting, model FIL35 TECH by LAMP. Made of 80% recycled aluminium extrusion, length 1680 mm, with matt black reflector ULTRA COMFORT and optics for light distribution control and low glare UGR<12. Model for MID-POWER LED, with colour temperature 3000K and CRI90. Built-in electronic wiring. With IP43, except for suspended installation, which becomes IP20, IK07 degree of protection. Insulation class I. Photobiological safety group 0. Lifetime: 50000 L90 B10. Available finishes: White, black and grey. Environmental Product Declaration - EPD@available, according to UNE-EN ISO 9001:2015 and UNE-EN ISO 14001:2015.



Finish: Matte white RAL 9010

Dimensions: 1.680 x 35 x 76 mm

Weight: 4.000 g

Installation: Surface

TECHNICAL SPECIFICATIONS:

Light output:	2.520 lm	°K :	3000
Plum:	26,7W	CRI :	90
Efficacy:	94,4 lm/w	R9 :	61
UGR:	<12	MacAdam:	3
Type:	MID POWER LED	Power Supply:	220-240V 50/60Hz
LED Lifetime:	50.000 L90 B10 (Ta=25°C)	Gear:	Electronic
Power:	22W		

Light output tolerance +/- 10%

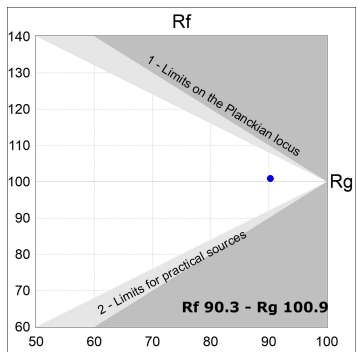
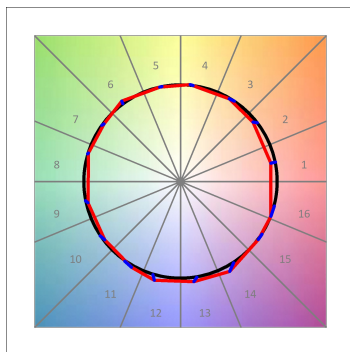
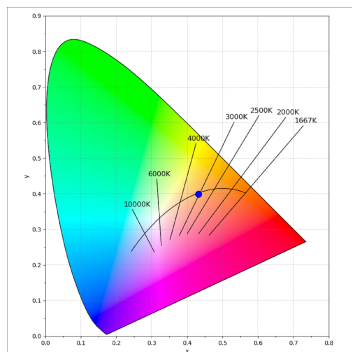
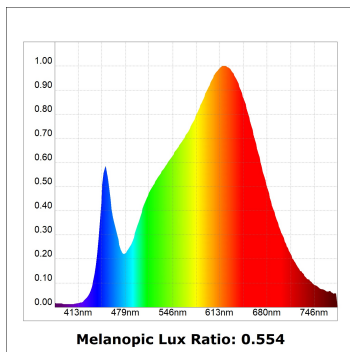
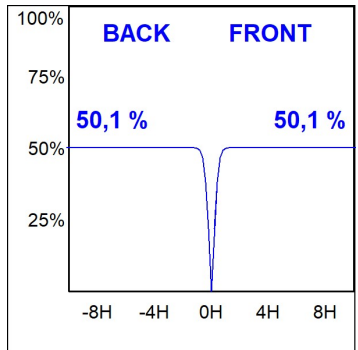
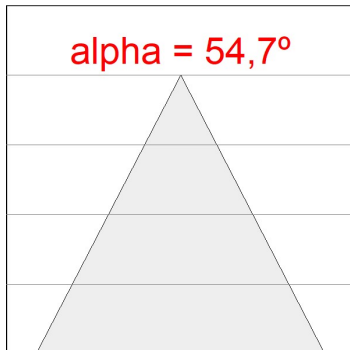
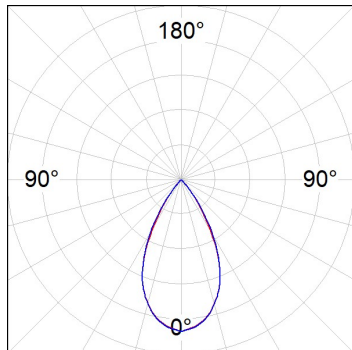


CUSTOM MADE OPTIONS:



PHOTOMETRIC DATA :

F31SF168MOTE930NW
 $\eta = 100\%$
 $I_{max} = 1305 \text{ cd/klm}$
 UTE:
 CIE: 98 100 100 100 100



ACCESORIES :

Assembly



Product code:

F3FX50B

Description:

ACC. WALL BRACKET FIL45 50MM BK.



Product code:

F3FX50G

Description:

ACC. WALL BRACKET FIL35 50MM GR.



Product code:

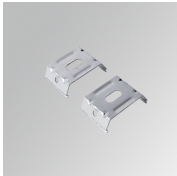
F3FX50W

Description:

ACC. WALL BRACKET FIL35 50MM WH.

ACCESORIES :

Support



Product code:

F3FX15G

Description:

ACC. CEILING BRACKET FIL35 15MM GR.