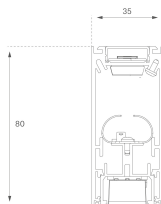


F31SF168MOTE930DB



**FIL35 SUR 1680 4400 9WW TECH DALI BK**

**Description:**

Suspended or mounted structure model FIL35 TECH 1680 LAMP brand. Made in extruded recycled aluminum with a rate of 80%, with matt black reflector ULTRA COMFORT Matt black and optics for light distribution control and low glare UGR<12. Model for LED MID-POWER, colour temperature 3000K with CRI90 and with electronic wiring Dali included. With IP43, except for suspended installation, which becomes IP20, IK07 protection rating. Insulation Class I. Photobiological safety group 0. LED lifetime: 50.000 L90 B10. Available finishes: White, black and grey. Environmental Product Declaration - EPD@available, according to UNE-EN ISO 9001:2015 and UNE-EN ISO 14001:2015.

**Finish:** Matte black RAL 9011

**Dimensions:** 1.680 x 35 x 76 mm

**Weight:** 4.000 g

**Installation:** Surface

**TECHNICAL SPECIFICATIONS:**

<b>Light output:</b>	2.520 lm	<b>°K :</b>	3000
<b>Plum:</b>	26,7W	<b>CRI :</b>	90
<b>Efficacy:</b>	94,4 lm/w	<b>R9 :</b>	61
<b>UGR:</b>	<12	<b>MacAdam:</b>	3
<b>Type:</b>	MID POWER LED	<b>Power Supply:</b>	220-240V 50/60Hz
<b>LED Lifetime:</b>	50.000 L90 B10 (Ta=25°C)	<b>Gear:</b>	Adjustable DALI
<b>Power:</b>	22W		

*Light output tolerance +/- 10%*

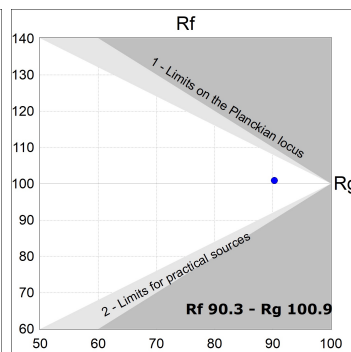
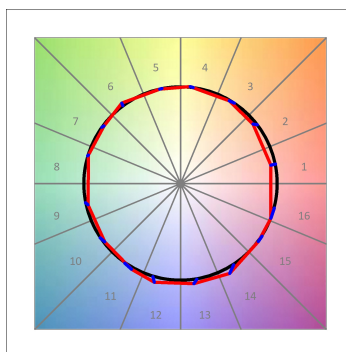
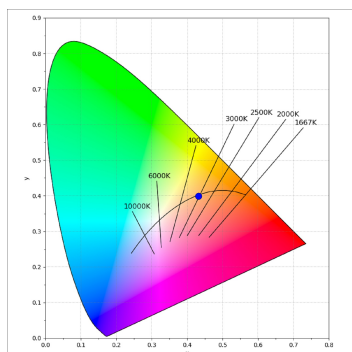
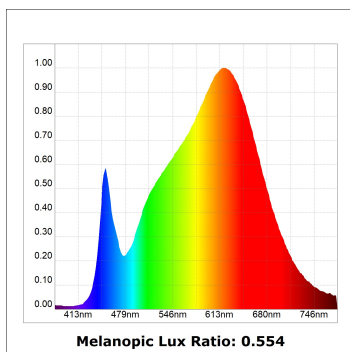
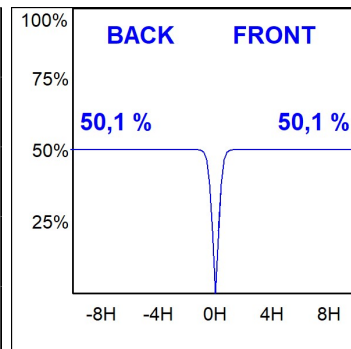
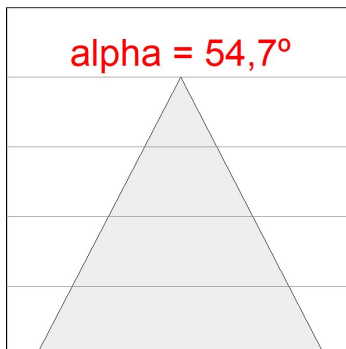
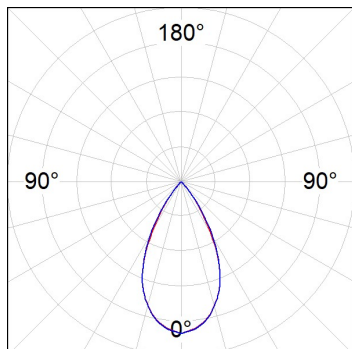


**CUSTOM MADE OPTIONS:**



PHOTOMETRIC DATA :

F31SF168MOTE930DB  
 $\eta = 100\%$   
 $I_{max} = 1305 \text{ cd/klm}$   
 UTE:  
 CIE: 98 100 100 100 100



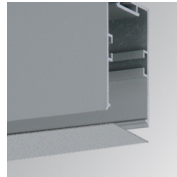
ACCESORIES :

Assembly



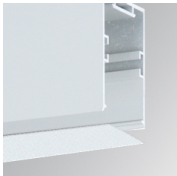
**Product code:**  
F3COX/MMB

**Description:**  
FIL 35 ACC. COVER X/MM BK.



**Product code:**  
F3COX/MMG

**Description:**  
FIL 35 ACC. COVER X/MM GR.



**Product code:**  
F3COX/MMW

**Description:**  
FIL 35 ACC. COVER X/MM WH.



**Product code:**  
F3FX50B

**Description:**  
ACC. WALL BRACKET FIL45 50MM BK.



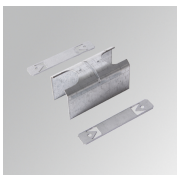
**Product code:**  
F3FX50G

**Description:**  
ACC. WALL BRACKET FIL35 50MM GR.



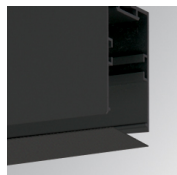
**Product code:**  
F3FX50W

**Description:**  
ACC. WALL BRACKET FIL35 50MM WH.



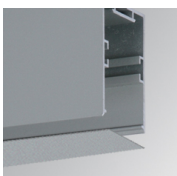
**Product code:**  
F3JO

**Description:**  
FIL35 ACC. INTM JOINT B



**Product code:**  
F3PRSUX/MMB

**Description:**  
FIL 35 ACC. SUS PROFIL X/MM BK.



**Product code:**  
F3PRSUX/MMG

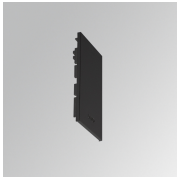
**Description:**  
FIL 35 ACC. SUS PROFIL X/MM GR.



**Product code:**  
F3PRSUX/MMW

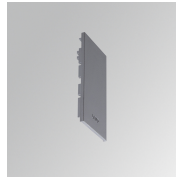
**Description:**  
FIL 35 ACC. SUS PROFIL X/MM WH.

**FIL35**



**Product code:**  
F3SUECB

**Description:**  
FIL35 ACC. SUR END COVER BK.



**Product code:**  
F3SUECG

**Description:**  
FIL35 ACC. SUR END COVER GR.



**Product code:**  
F3SUECW

**Description:**  
FIL35 ACC. SUR END COVER WH.

**ACCESORIES :**

**Suspension**



**Product code:**  
F3SUCAEMFA1000NB  
F3SUCAEMFA4000NB

**Description:**  
ACC. ELECMEC FIL35 QUICK SUSP 1M BK.  
ACC. ELECMEC FIL35 QUICK SUSP 4M BK.



**Product code:**  
F3SUCAEMFA1000NG  
F3SUCAEMFA4000NG

**Description:**  
ACC. ELECMEC FIL35 QUICK SUSP 1M GR.  
ACC. ELECMEC FIL35 QUICK SUSP 4M GR.



**Product code:**  
F3SUCAEMFA1000NW  
F3SUCAEMFA4000NW

**Description:**  
ACC. ELECMEC FIL35 QUICK SUSP 1M WH.  
ACC. ELECMEC FIL35 QUICK SUSP 4M WH.



**Product code:**  
F3SUCAWI1000DB  
F3SUCAWI4000DB

**Description:**  
ACC. ELECMEC FIL35 QUICK SUSP 1M 5P BK.  
ACC. ELECMEC FIL35 QUICK SUSP 4M 5P BK.



**Product code:**  
F3SUCAWI1000DG  
F3SUCAWI4000DG

**Description:**  
ACC. ELECMEC FIL35 QUICK SUSP 1M 5P GR.  
ACC. ELECMEC FIL35 QUICK SUSP 4M 5P GR.



**Product code:**  
F3SUCAWI1000DW  
F3SUCAWI4000DW

**Description:**  
ACC. ELECMEC FIL35 QUICK SUSP 1M 5P WH.  
ACC. ELECMEC FIL35 QUICK SUSP 4M 5P WH.



**Product code:**  
F3SUWIDE1000G

**Description:**  
FIL35 ACC. QUICK STEEL CABLE 1M NK.



**Product code:**  
F3SUWIDE4000G

**Description:**  
FIL35 ACC. QUICK STEEL CABLE 4M NK.

---

**ACCESORIES :**

**Support**



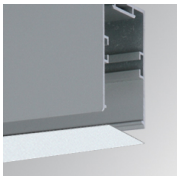
**Product code:**  
F3FX15G

**Description:**  
ACC. CEILING BRACKET FIL35 15MM GR.

---

**ACCESORIES :**

**Optical**



**Product code:**  
F3DIX/MMOP

**Description:**  
FIL 35 ACC. OPAL DIFFUSER X/MM