

F31SF168MOOP840DB

- FIL35 SUR 1680 4440 NW OPAL DALI BK.

Description:

Finition: Noir mat RAL 9011

Installation: Surface

SPÉCIFICATIONS TECHNIQUES:

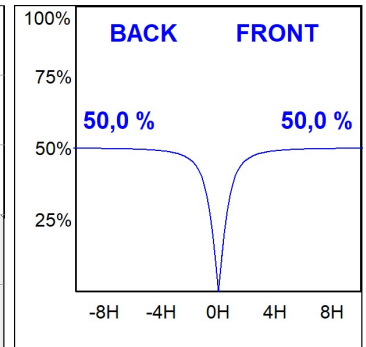
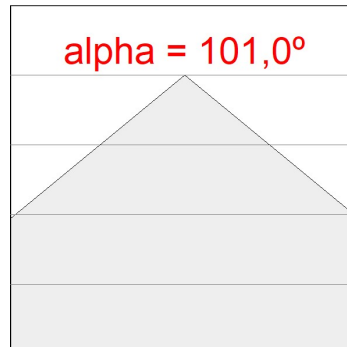
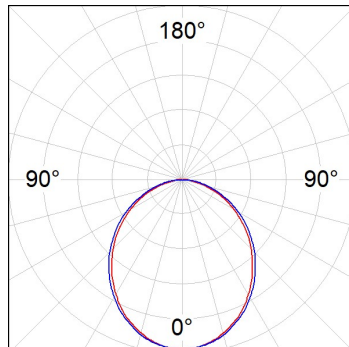

Flux lumineux:	2.658 lm	°K :	4000
Plum:	25,2W	IRC :	80
Efficacité:	105,5 lm/w	MacAdam:	3
Type:	MID POWER LED	Alimentation:	220-240V 50/60Hz
Durée de vie LED:	70.000 L80 B10 (Ta=25°C)	Équipement:	Réglable DALI
Puissance:	22W		

Tolérance de flux lumineux +/- 10%



DONNÉES PHOTOMÉTRIQUES :

F31SF168MOOP840DB
 $\eta = 100\%$
 $I_{max} = 389 \text{ cd/klm}$
UTE: 1,00E
CIE: 49 80 97 100 100



ACCESSOIRES :

Montage

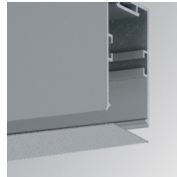


Code produit:

F3COX/MMB

Description:

FIL 35 ACC. COVER X/MM BK.

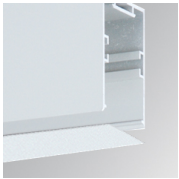


Code produit:

F3COX/MMG

Description:

FIL 35 ACC. COVER X/MM GR.



Code produit:

F3COX/MMW

Description:

FIL 35 ACC. COVER X/MM WH.



Code produit:

F3FX50B

Description:

ACC. WALL BRACKET FIL45 50MM BK.



Code produit:

F3FX50G

Description:

ACC. WALL BRACKET FIL35 50MM GR.



Code produit:

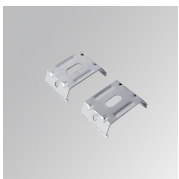
F3FX50W

Description:

ACC. WALL BRACKET FIL35 50MM WH.

ACCESSOIRES :

Support



Code produit:

F3FX15G

Description:

ACC. CEILING BRACKET FIL35 15MM GR.