

F31SF168MOOC840NB

- FIL35 SUR 1680 4440 NW OP COMF BK.

Description:

Finition: Noir mat RAL 9011

Installation: Surface

SPÉCIFICATIONS TECHNIQUES:

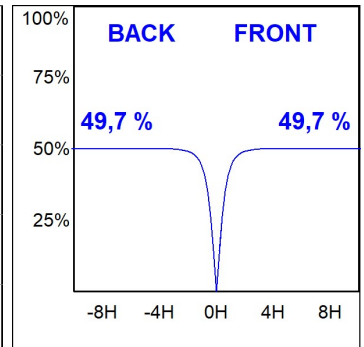
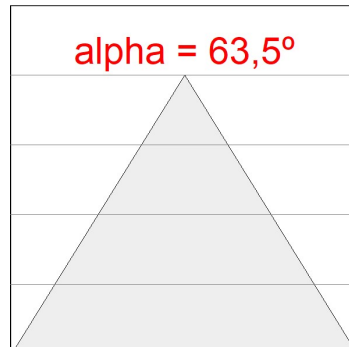
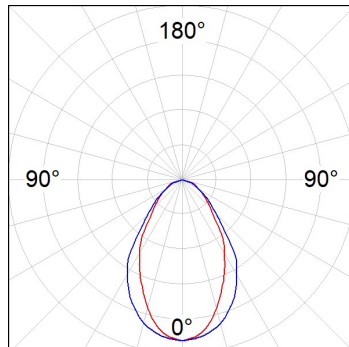

Flux lumineux:	2.445 lm	°K :	4000
Plum:	25,2W	IRC :	80
Efficacité:	97 lm/w	MacAdam:	3
UGR:	<19	Alimentation:	220-240V 50/60Hz
Type:	MID POWER LED	Équipement:	Électronique
Durée de vie LED:	70.000 L80 B10 (Ta=25°C)		
Puissance:	22W		

Tolérance de flux lumineux +/- 10%



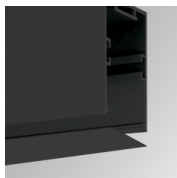
DONNÉES PHOTOMÉTRIQUES :

F31SF168MOOC840NB
 $\eta = 99\%$
 $I_{max} = 693 \text{ cd/klm}$
UTE: 0,99C
CIE: 70 93 100 100 99



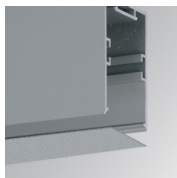
ACCESSOIRES :

Montage



Code produit:
F3COX/MMB

Description:
FIL 35 ACC. COVER X/MM BK.



Code produit:
F3COX/MMG

Description:
FIL 35 ACC. COVER X/MM GR.



Code produit:
F3COX/MMW

Description:
FIL 35 ACC. COVER X/MM WH.



Code produit:
F3FX50B

Description:
ACC. WALL BRACKET FIL45 50MM BK.



Code produit:
F3FX50G

Description:
ACC. WALL BRACKET FIL35 50MM GR.



Code produit:
F3FX50W

Description:
ACC. WALL BRACKET FIL35 50MM WH.

ACCESSOIRES :

Support



Code produit:
F3FX15G

Description:
ACC. CEILING BRACKET FIL35 15MM GR.