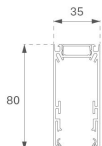
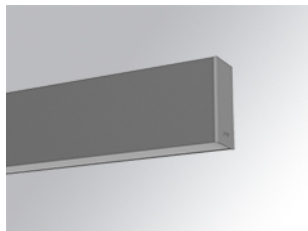


F31SF168MOOC830DG



- **FIL35 SUR 1680 4440 WW OP COMF DALI GR.**

Description:

Suspended or mounted structure model FIL35 SUR 1680 LAMP brand. Made in extruded recycled aluminum with a rate of 80%, with and opal comfort diffuser made of a translucent polycarbonate diffuser and an optical film to achieve a controlled light distribution and low UGR<19. Model for LED MID-POWER, colour temperature 3000K with CRI80 and with electronic DALI wiring included. With IP43, except for suspended installation, which becomes IP20, IK07 protection rating. Insulation Class I. Photobiological safety group 0. LED lifetime: 70.000 L80 B10. Available finishes: White, black and grey. Environmental Product Declaration - EPD@available, according to UNE-EN ISO 9001:2015 and UNE-EN ISO 14001:2015.

Finish: Gloss grey

Dimensions: 1.680 x 35 x 80 mm

Weight: 3.674 g

Installation: Surface

TECHNICAL SPECIFICATIONS:

| | | | |
|----------------------|--------------------------|----------------------|------------------|
| Light output: | 2.357 lm | °K : | 3000 |
| Plum: | 25,2W | CRI : | 80 |
| Efficacy: | 93,5 lm/w | MacAdam: | 3 |
| UGR: | <19 | Power Supply: | 220-240V 50/60Hz |
| Type: | MID POWER LED | Gear: | Adjustable DALI |
| LED Lifetime: | 70.000 L80 B10 (Ta=25°C) | | |
| Power: | 22W | | |

Light output tolerance +/- 10%

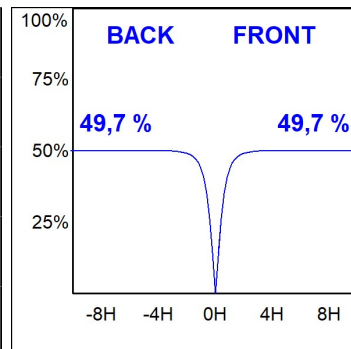
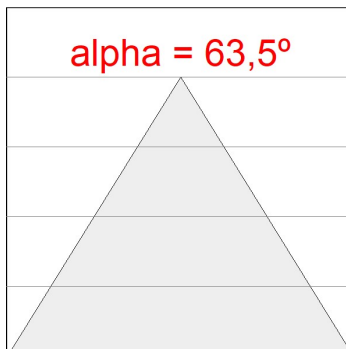
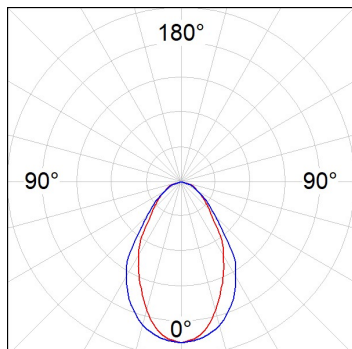



CUSTOM MADE OPTIONS:



PHOTOMETRIC DATA :

F31SF168MOOC830DG
 $\eta = 99\%$
 $I_{max} = 693 \text{ cd/klm}$
UTE: 0,99C
CIE: 70 93 100 100 99



ACCESORIES :

Assembly



Product code:
F3COX/MMB

Description:
FIL 35 ACC. COVER X/MM BK.



Product code:
F3COX/MMG

Description:
FIL 35 ACC. COVER X/MM GR.



Product code:
F3COX/MMW

Description:
FIL 35 ACC. COVER X/MM WH.



Product code:
F3FX50B

Description:
ACC. WALL BRACKET FIL45 50MM BK.



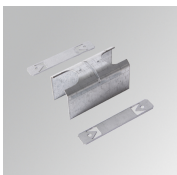
Product code:
F3FX50G

Description:
ACC. WALL BRACKET FIL35 50MM GR.



Product code:
F3FX50W

Description:
ACC. WALL BRACKET FIL35 50MM WH.



Product code:
F3JO

Description:
FIL35 ACC. INTM JOINT B



Product code:
F3PRSUX/MMB

Description:
FIL 35 ACC. SUS PROFIL X/MM BK.



Product code:
F3PRSUX/MMG

Description:
FIL 35 ACC. SUS PROFIL X/MM GR.



Product code:
F3PRSUX/MMW

Description:
FIL 35 ACC. SUS PROFIL X/MM WH.

FIL35



Product code:
F3SUECB

Description:
FIL35 ACC. SUR END COVER BK.



Product code:
F3SUECG

Description:
FIL35 ACC. SUR END COVER GR.



Product code:
F3SUECW

Description:
FIL35 ACC. SUR END COVER WH.

ACCESORIES :

Suspension



Product code:
F3SUCAEMFA1000NB
F3SUCAEMFA4000NB

Description:
ACC. ELECMEC FIL35 QUICK SUSP 1M BK.
ACC. ELECMEC FIL35 QUICK SUSP 4M BK.



Product code:
F3SUCAEMFA1000NG
F3SUCAEMFA4000NG

Description:
ACC. ELECMEC FIL35 QUICK SUSP 1M GR.
ACC. ELECMEC FIL35 QUICK SUSP 4M GR.



Product code:
F3SUCAEMFA1000NW
F3SUCAEMFA4000NW

Description:
ACC. ELECMEC FIL35 QUICK SUSP 1M WH.
ACC. ELECMEC FIL35 QUICK SUSP 4M WH.



Product code:
F3SUCAWI1000DB
F3SUCAWI4000DB

Description:
ACC. ELECMEC FIL35 QUICK SUSP 1M 5P BK.
ACC. ELECMEC FIL35 QUICK SUSP 4M 5P BK.



Product code:
F3SUCAWI1000DG
F3SUCAWI4000DG

Description:
ACC. ELECMEC FIL35 QUICK SUSP 1M 5P GR.
ACC. ELECMEC FIL35 QUICK SUSP 4M 5P GR.



Product code:
F3SUCAWI1000DW
F3SUCAWI4000DW

Description:
ACC. ELECMEC FIL35 QUICK SUSP 1M 5P WH.
ACC. ELECMEC FIL35 QUICK SUSP 4M 5P WH.



Product code:
F3SUWIDE1000G

Description:
FIL35 ACC. QUICK STEEL CABLE 1M NK.



Product code:
F3SUWIDE4000G

Description:
FIL35 ACC. QUICK STEEL CABLE 4M NK.

ACCESORIES :

Support

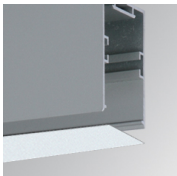


Product code:
F3FX15G

Description:
ACC. CEILING BRACKET FIL35 15MM GR.

ACCESORIES :

Optical



Product code:
F3DIX/MMOP

Description:
FIL 35 ACC. OPAL DIFFUSER X/MM