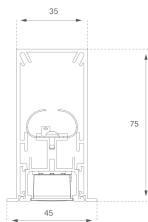


F31RE168MOTE940DB



**FIL35 REC 1680 4400 9NW TECH DALI BK**

**Description:**

Structure to recessed model FIL35 TECH 1680 LAMP brand. Made in extruded recycled aluminum with a rate of 80%, with matt black reflector ULTRA COMFORT Matt black and optics for light distribution control and low glare UGR<12. Model for LED MID-POWER, colour temperature 4000K with CRI90 and with electronic wiring Dali included. With IP43, IK07 protection rating. Insulation Class I. Photobiological safety group 0. LED lifetime: 50.000 L90 B10. Available finishes: White, black and grey. Environmental Product Declaration - EPD@available, according to UNE-EN ISO 9001:2015 and UNE-EN ISO 14001:2015.

**Finish:** Matte black RAL 9011

**Dimensions:** 1.680 x 35 x 76 mm

**Weight:** 4.000 g

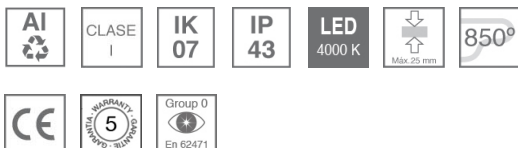
**Installation:** Recessed

**Recessing measures:** 1,688 x 42 x 0 mm

**TECHNICAL SPECIFICATIONS:**

<b>Light output:</b>	2.640 lm	<b>°K :</b>	4000
<b>Plum:</b>	26,7W	<b>CRI :</b>	90
<b>Efficacy:</b>	98,9 lm/w	<b>R9 :</b>	85
<b>UGR:</b>	<12	<b>MacAdam:</b>	3
<b>Type:</b>	MID POWER LED	<b>Power Supply:</b>	220-240V 50/60Hz
<b>LED Lifetime:</b>	50.000 L90 B10 (Ta=25°C)	<b>Gear:</b>	Adjustable DALI
<b>Power:</b>	22W		

*Light output tolerance +/- 10%*

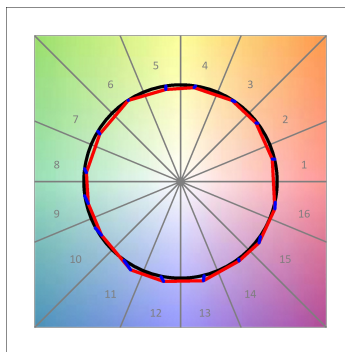
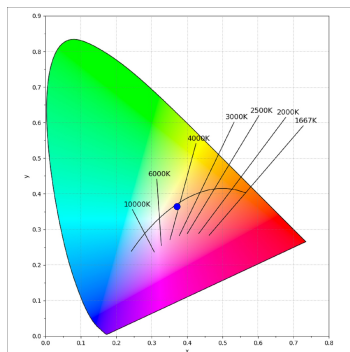
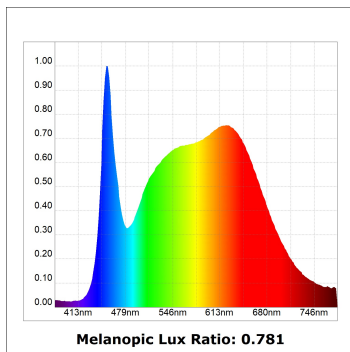
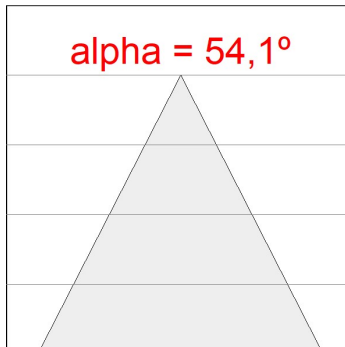
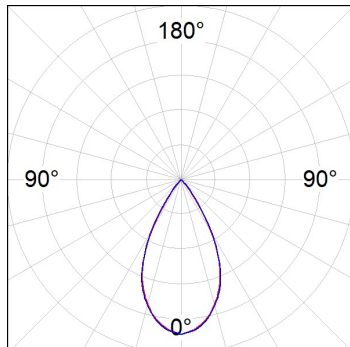


**CUSTOM MADE OPTIONS:**



PHOTOMETRIC DATA :

F31RE168MOTE940DB  
 $\eta = 100\%$   
 $I_{max} = 1333 \text{ cd/klm}$   
 UTE:  
 CIE: 98 100 100 100 100



**ACCESSORIES :**

**Assembly**



**Product code:**  
F3COX/MMB

**Description:**  
FIL 35 ACC. COVER X/MM BK.



**Product code:**  
F3COX/MMG

**Description:**  
FIL 35 ACC. COVER X/MM GR.



**Product code:**  
F3COX/MMW

**Description:**  
FIL 35 ACC. COVER X/MM WH.



**Product code:**  
F3PRREX/MMB

**Description:**  
FIL 35 ACC. REC PROFIL X/MM BK.



**Product code:**  
F3PRREX/MMG

**Description:**  
FIL 35 ACC. REC PROFIL X/MM GR.



**Product code:**  
F3PRREX/MMW

**Description:**  
FIL 35 ACC. REC PROFIL X/MM WH.



**Product code:**  
F3REECB

**Description:**  
FIL 35 ACC. REC END COVER BK.



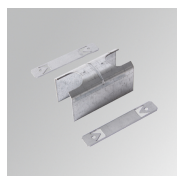
**Product code:**  
F3REECG

**Description:**  
FIL 35 ACC. REC END COVER GR.



**Product code:**  
F3REECW

**Description:**  
FIL 35 ACC. REC END COVER WH.



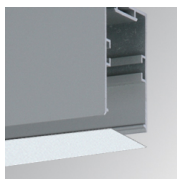
**Product code:**  
F3REJO

**Description:**  
FIL35 ACC. INTM JOINT B RECESSED

**ACCESSORIES :**

**Optical**

## FIL35



**Product code:**

F3DIX/MMOP

**Description:**

FIL 35 ACC. OPAL DIFFUSER X/MM