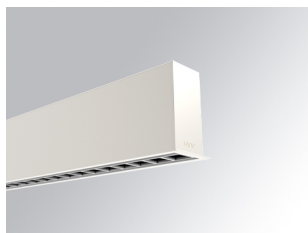


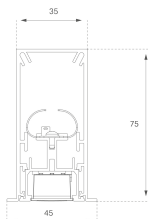
F31RE168MOTE930NW



- FIL35 REC 1680 4400 9WW TECH WH

**Description:**

Recessed structure for suspension or surface mounting, model FIL35 TECH by LAMP. Made of 80% recycled aluminium extrusion, length 1680 mm, with matt black reflector ULTRA COMFORT and optics for light distribution control and low glare UGR<12. Model for MID-POWER LED, with colour temperature 3000K and CRI90. Built-in electronic wiring. With IP43, IK07 degree of protection. Insulation class I. Photobiological safety group 0. Lifetime: 50000 L90 B10. Available finishes: White, black and grey. Environmental Product Declaration - EPD@available, according to UNE-EN ISO 9001:2015 and UNE-EN ISO 14001:2015.



**Finish:** Matte white RAL 9010

**Dimensions:** 1.680 x 35 x 76 mm

**Weight:** 4.000 g

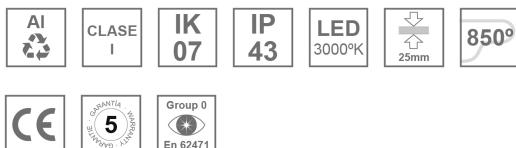
**Installation:** Recessed

**Recessing measures:** 1,688 x 42 x 0 mm

**TECHNICAL SPECIFICATIONS:**

<b>Light output:</b>	2.520 lm	<b>°K :</b>	3000
<b>Plum:</b>	26,7W	<b>CRI :</b>	90
<b>Efficacy:</b>	94,4 lm/w	<b>R9 :</b>	61
<b>UGR:</b>	<12	<b>MacAdam:</b>	3
<b>Type:</b>	MID POWER LED	<b>Power Supply:</b>	220-240V 50/60Hz
<b>LED Lifetime:</b>	50.000 L90 B10 (Ta=25°C)	<b>Gear:</b>	Electronic
<b>Power:</b>	22W		

*Light output tolerance +/- 10%*



**CUSTOM MADE OPTIONS:**



PHOTOMETRIC DATA :

