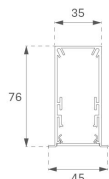


F31RE168MOOC840DW

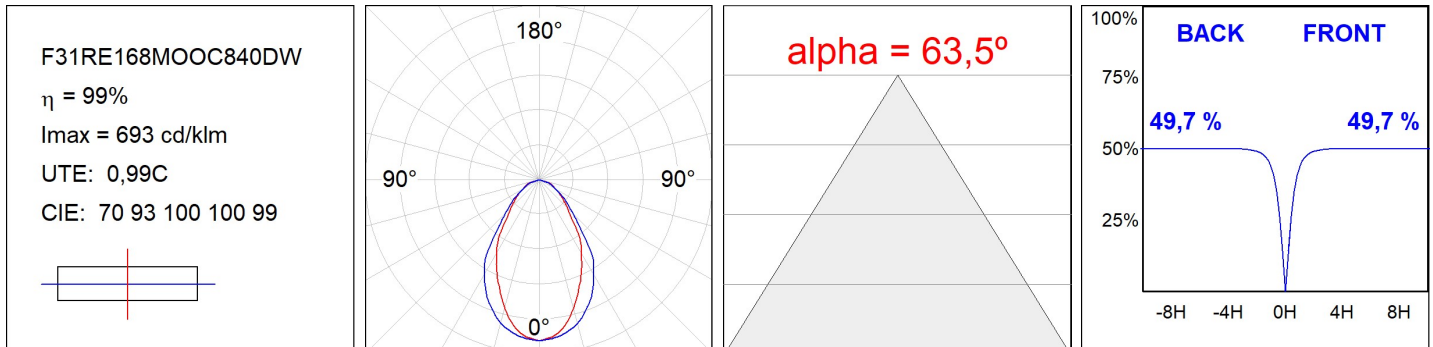
- FIL35 REC 1680 4440 NW OP COMF DALI WH.

Description:**Finition:** Blanc mat RAL 9010**Installation:** Encastré**SPÉCIFICATIONS TECHNIQUES:**

Flux lumineux:	2.445 lm	°K :	4000
Plum:	25,2W	IRC :	80
Efficacité:	97 lm/w	MacAdam:	3
UGR:	<19	Alimentation:	220-240V 50/60Hz
Type:	MID POWER LED	Équipement:	Réglable DALI
Durée de vie LED:	70.000 L80 B10 (Ta=25°C)		
Puissance:	22W		

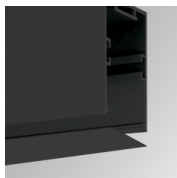
Tolérance de flux lumineux +/- 10%

DONNÉES PHOTOMÉTRIQUES :



ACCESSOIRES :

Montage

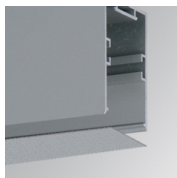


Code produit:

F3COX/MMB

Description:

FIL 35 ACC. COVER X/MM BK.

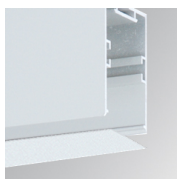


Code produit:

F3COX/MMG

Description:

FIL 35 ACC. COVER X/MM GR.



Code produit:

F3COX/MMW

Description:

FIL 35 ACC. COVER X/MM WH.