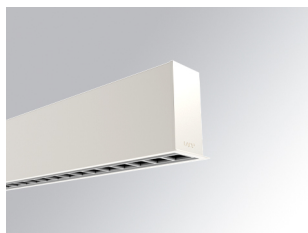


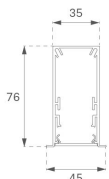
F31RE084MOTE930DW



- FIL35 REC 840 2200 9WW TECH DALI WH

Description:

Recessed structure for suspension or surface mounting, model FIL35 TECH by LAMP. Made of 80% recycled aluminium extrusion, length 840 mm, with matt black reflector ULTRA COMFORT and optics for light distribution control and low glare UGR<12. Model for MID-POWER LED, with colour temperature 3000K and CRI90. Built-in electronic wiring Dali. With IP43, IK07 degree of protection. Insulation class I. Photobiological safety group 0. Lifetime: 50000 L90 B10. Available finishes: White, black and grey. Environmental Product Declaration - EPD@available, according to UNE-EN ISO 9001:2015 and UNE-EN ISO 14001:2015.



Finish: Matte white RAL 9010

Dimensions: 840 x 35 x 76 mm

Weight: 2.000 g

Installation: Recessed

Recessing measures: 848 x 42 x 0 mm

TECHNICAL SPECIFICATIONS:

Light output:	1.260 lm	°K :	3000
Plum:	13,7W	CRI :	90
UGR:	<12	R9 :	61
Type:	MID POWER LED	MacAdam:	3
LED Lifetime:	50.000 L90 B10 (Ta=25°C)	Power Supply:	220-240V 50/60Hz
Power:	11W	Gear:	Adjustable DALI

Light output tolerance +/- 10%



CUSTOM MADE OPTIONS:



PHOTOMETRIC DATA :

