

F31RE084MOOP840NW

- FIL35 REC 840 2220 NW OPAL WH.

Description:

Finish: Matte white RAL 9010

Installation: Recessed

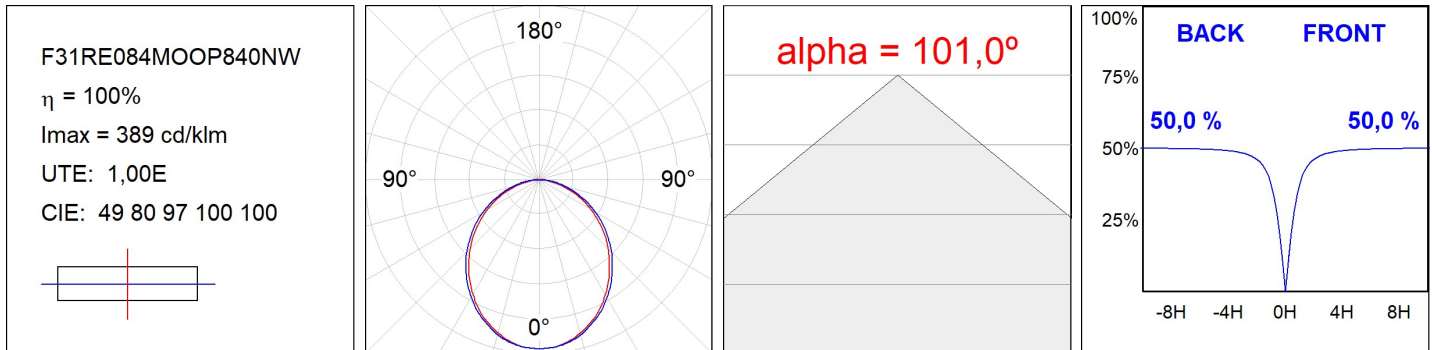
TECHNICAL SPECIFICATIONS:

Light output:	1.329 lm	°K :	4000
Plum:	13,5W	CRI :	80
Efficacy:	98,4 lm/w	MacAdam:	3
Type:	MID POWER LED	Power Supply:	220-240V 50/60Hz
LED Lifetime:	70.000 L80 B10 (Ta=25°C)	Gear:	Electronic
Power:	12W		

Light output tolerance +/- 10%

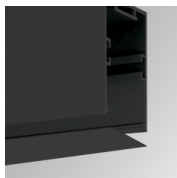


PHOTOMETRIC DATA :



ACCESORIES :

Assembly

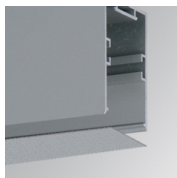


Product code:

F3COX/MMB

Description:

FIL 35 ACC. COVER X/MM BK.

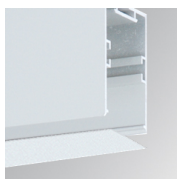


Product code:

F3COX/MMG

Description:

FIL 35 ACC. COVER X/MM GR.



Product code:

F3COX/MMW

Description:

FIL 35 ACC. COVER X/MM WH.