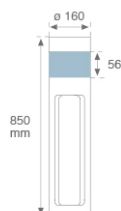
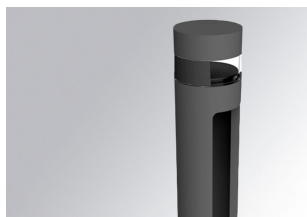


## B-SIDE LED

BS2188510830NA



## B-SIDE G2 180° 850 1200 WW ANT

## Description:

Bollard model B-SIDE G2 180° LED 850 1200, LAMP brand. Manufactured from die-cast aluminium and extruded body of recycled aluminium with an 80% lacquered rate and translucent diffuser. 850mm height. Its base has an anti-corrosion electro coating treatment. 3000K CRI 80 LED. Control gear included. IP65, IK06 protection rating. Insulation class I. Lifetime: 72. 000 L80 B10. BUG Rate: B0 U2 G1, ULOR: 7,4%. Available finishes: anthracite and textured grey.

**Finish:** Textured anthracite

**Dimensions:** Ø 160 mm x 850 mm

**Weight:** 4.384 g

**Installation:** Standing

## TECHNICAL SPECIFICATIONS:

<b>Light output:</b>	350 lm	<b>°K :</b>	3000
<b>Plum:</b>	8,7W	<b>CRI :</b>	80
<b>Efficacy:</b>	40,2 lm/w	<b>MacAdam:</b>	3
<b>Type:</b>	MID POWER LED	<b>Power Supply:</b>	220-240V 50/60Hz
<b>LED Lifetime:</b>	72.000 L80 B10 (Ta=25°C)	<b>Gear:</b>	Electronic
<b>Power:</b>	6,5W		

*Light output tolerance +/- 10%*


## CUSTOM MADE OPTIONS:



B-SIDE LED

BS2188510830NA

B-SIDE G2 180° 850 1200 WW ANT

PHOTOMETRIC DATA :

