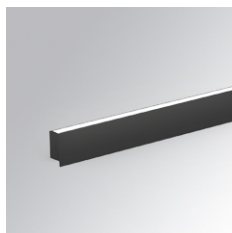


AM2120DIMOOO840NB


AMBIENT G2 LC 1200 D/I NW OP/OP BK
Description:

LAMP surface wall mounted system AMBIENT G2 LC 1200 D/I. Manufactured from extruded aluminum with an 75% recycling rate with Opal polycarbonate diffusers. Model for LED MID-POWER, colour temperature 4000K and IRC80. Electronic ON OFF gear included. IP40, IK07 ratings. Insulation Class I. Photobiological safety group 0. LED life time: >72.000 L80B10. Available luminaire body finishes: White and black. Frontal accessory sold separately with the desired finish. White, Black, Raw o Anodised (Gold, Bronze, Champagne, Blue and Black).

Finish: Matte black RAL 9011

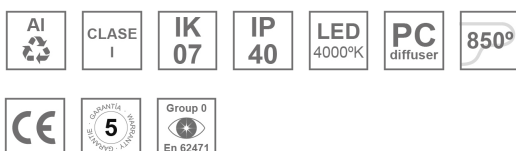
Dimensions: 1.200 x 80 x 48 mm

Installation: Wall mounted

TECHNICAL SPECIFICATIONS:

Light output:	4.154 lm	°K :	4000
Plum:	34,8W	CRI :	80
Efficacy:	119,4 lm/w	MacAdam:	3
Type:	MID POWER	Power Supply:	220-240V 50/60Hz
LED Lifetime:	>72.000 L80B10 (Ta=25°C)	Gear:	Electronic
Power:	32W		

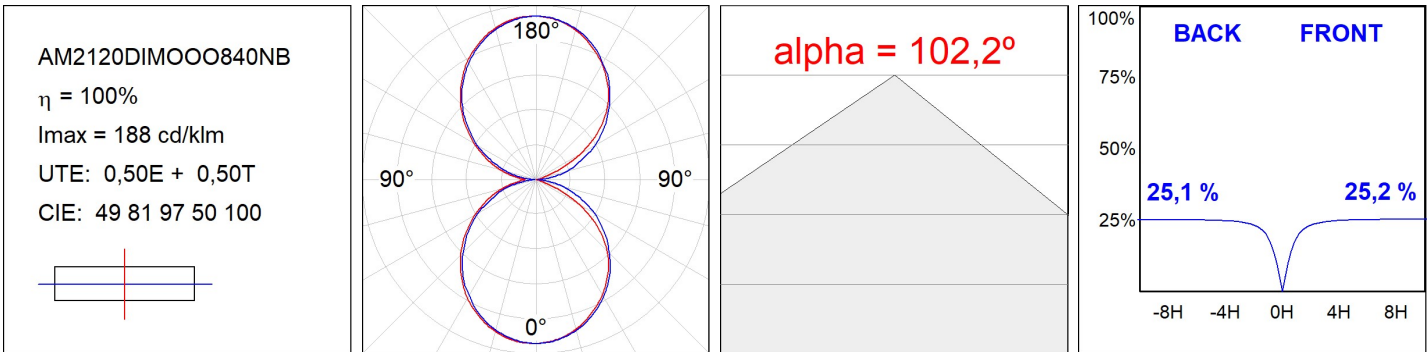
Light output tolerance +/- 10%

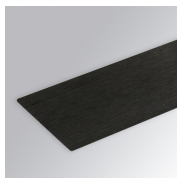

CUSTOM MADE OPTIONS:


AM2120DIMOOO840NB

AMBIENT G2 LC 1200 D/I NW OP/OP BK

PHOTOMETRIC DATA :

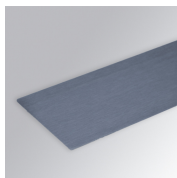


ACCESORIES :**Assembly****Product code:**

AM2AC120ABK

Description:

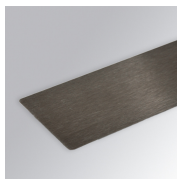
AMBIENT G2 ACC FRONT INT 1200 AN. BLACK

**Product code:**

AM2AC120ABL

Description:

AMBIENT G2 ACC FRONT INT 1200 AN. BLUE

**Product code:**

AM2AC120ABZ

Description:

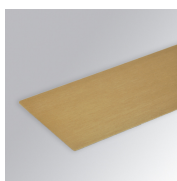
AMBIENT G2 ACC FRONT INT 1200 AN. BRONZE

**Product code:**

AM2AC120ACH

Description:

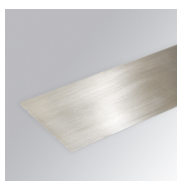
AMBIENT G2 ACC FRONT INT 1200 AN. CHAMP

**Product code:**

AM2AC120AGD

Description:

AMBIENT G2 ACC FRONT INT 1200 AN. GOLD

**Product code:**

AM2AC120ARW

Description:

AMBIENT G2 ACC FRONT INT 1200 AL RAW

**Product code:**

AM2AC120B

Description:

AMBIENT G2 ACC FRONT INT 1200MM BK

**Product code:**

AM2AC120W

Description:

AMBIENT G2 ACC FRONT INT 1200MM WH

**Product code:**

AM2ACECB

Description:

AMBIENT G2 ACC END COVER BK

**Product code:**

AM2ACECW

Description:

AMBIENT G2 ACC END COVER WH