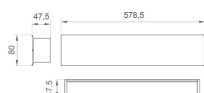


AM2060DRMOGZ830NW


AMBIENT G2 LC 600 DIR WW GRAZER WH
Description:

LAMP surface wall mounted system AMBIENT G2 LC 600 DIR. Manufactured from extruded aluminum with an 75% recycling rate with Grazer polycarbonate optic. Model for LED MID-POWER, colour temperature 3000K and IRC80. Electronic ON OFF gear included. IP40, IK07 ratings. Insulation Class I. Photobiological safety group 0. LED life time: 63.000 L90B10. Available luminaire body finishes: White and black. Frontal accessory sold separately with the desired finish. White, Black, Raw o Anodised (Gold, Bronze, Champagne, Blue and Black).

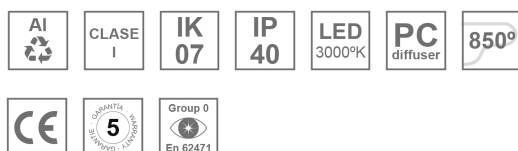
Finish: Matte white RAL 9010

Dimensions: 600 x 80 x 48 mm

Installation: Wall mounted

TECHNICAL SPECIFICATIONS:

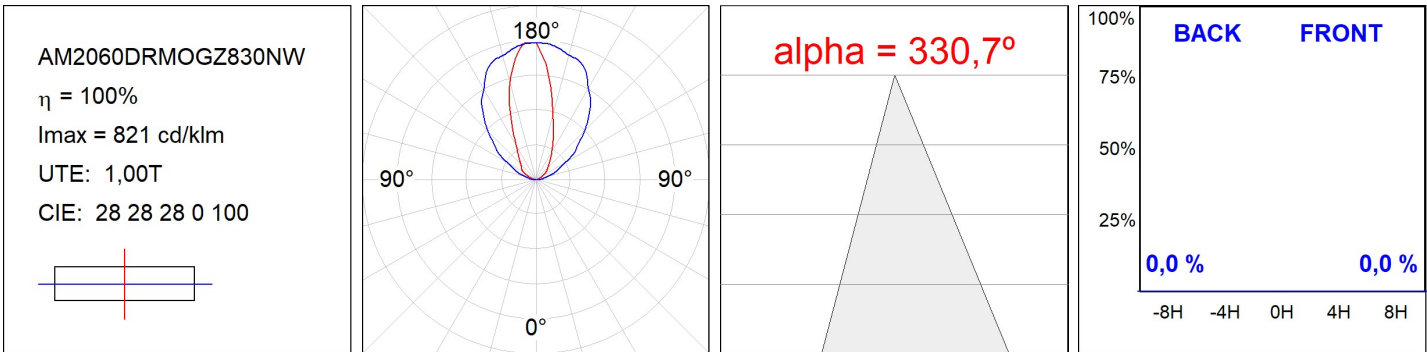
Light output:	1.990 lm	°K :	3000
Plum:	15,8W	CRI :	80
Efficacy:	125,9 lm/w	MacAdam:	3
Type:	MID POWER	Power Supply:	220-240V 50/60Hz
LED Lifetime:	63.000 L90B10 (Ta=25°C)	Gear:	Electronic
Power:	13W		

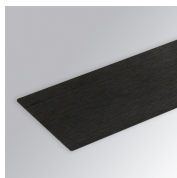
Light output tolerance +/- 10%

CUSTOM MADE OPTIONS:


AM2060DRMOGZ830NW

AMBIENT G2 LC 600 DIR WW GRAZER WH

PHOTOMETRIC DATA :

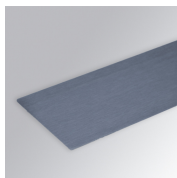


ACCESORIES :**Assembly****Product code:**

AM2AC060ABK

Description:

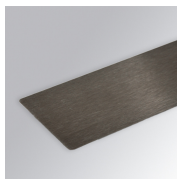
AMBIENT G2 ACC FRONT END 600 AN. BLACK

**Product code:**

AM2AC060ABL

Description:

AMBIENT G2 ACC FRONT END 600 AN. BLUE

**Product code:**

AM2AC060ABZ

Description:

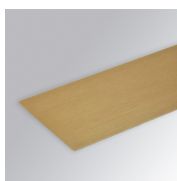
AMBIENT G2 ACC FRONT END 600 AN. BRONZE

**Product code:**

AM2AC060ACH

Description:

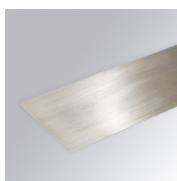
AMBIENT G2 ACC FRONT END 600 AN. CHAMP

**Product code:**

AM2AC060AGD

Description:

AMBIENT G2 ACC FRONT END 600 AN. GOLD

**Product code:**

AM2AC060ARW

Description:

AMBIENT G2 ACC FRONT END 600 AL RAW

**Product code:**

AM2AC060B

Description:

AMBIENT G2 ACC FRONT END 600MM BK

**Product code:**

AM2AC060W

Description:

AMBIENT G2 ACC FRONT END 600MM WH

**Product code:**

AM2ACECB

Description:

AMBIENT G2 ACC END COVER BK

**Product code:**

AM2ACECW

Description:

AMBIENT G2 ACC END COVER WH