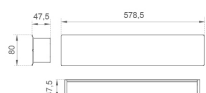


AM2060DIMOOA840DW


AMBIENT G2 LC 600 D/I NW OP/AS DA WH
Description:

LAMP surface wall mounted system AMBIENT G2 LC 600 D/I. Manufactured from extruded aluminum with an 75% recycling rate with Opal polycarbonate diffusers. Model for LED MID-POWER, colour temperature 4000K and IRC80. Electronic DALI gear included. IP40, IK07 ratings. Insulation Class I. Photobiological safety group 0. LED life time: >72.000 L80B10. Available luminaire body finishes: White and black. Frontal accessory sold separately with the desired finish. White, Black, Raw o Anodised (Gold, Bronze, Champagne, Blue and Black).

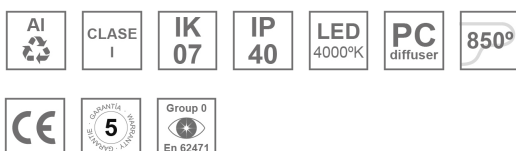
Finish: Matte white RAL 9010

Dimensions: 600 x 80 x 48 mm

Installation: Wall mounted

TECHNICAL SPECIFICATIONS:

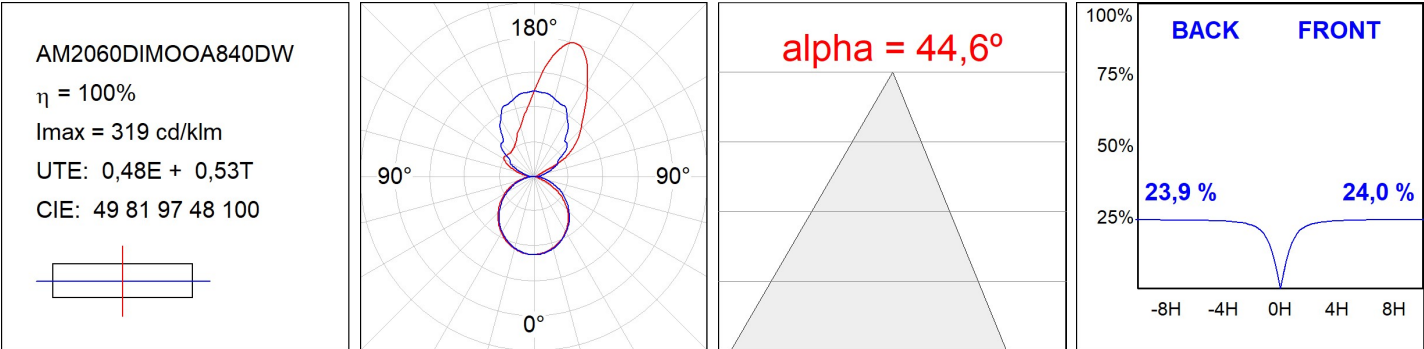
Light output:	2.180 lm	°K :	4000
Plum:	18,4W	CRI :	80
Efficacy:	118,5 lm/w	MacAdam:	3
Type:	MID POWER	Power Supply:	220-240V 50/60Hz
LED Lifetime:	>72.000 L80B10 (Ta=25°C)	Gear:	Adjustable DALI
Power:	16W		

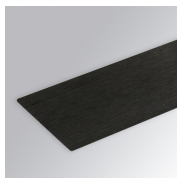
Light output tolerance +/- 10%

CUSTOM MADE OPTIONS:


AM2060DIMOOA840DW

AMBIENT G2 LC 600 D/I NW OP/AS DA WH

PHOTOMETRIC DATA :

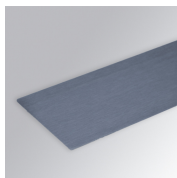


ACCESORIES :**Assembly****Product code:**

AM2AC060ABK

Description:

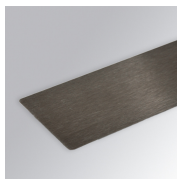
AMBIENT G2 ACC FRONT END 600 AN. BLACK

**Product code:**

AM2AC060ABL

Description:

AMBIENT G2 ACC FRONT END 600 AN. BLUE

**Product code:**

AM2AC060ABZ

Description:

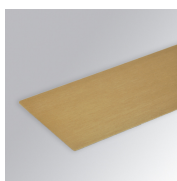
AMBIENT G2 ACC FRONT END 600 AN. BRONZE

**Product code:**

AM2AC060ACH

Description:

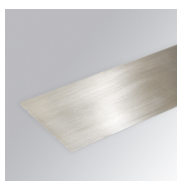
AMBIENT G2 ACC FRONT END 600 AN. CHAMP

**Product code:**

AM2AC060AGD

Description:

AMBIENT G2 ACC FRONT END 600 AN. GOLD

**Product code:**

AM2AC060ARW

Description:

AMBIENT G2 ACC FRONT END 600 AL RAW

**Product code:**

AM2AC060B

Description:

AMBIENT G2 ACC FRONT END 600MM BK

**Product code:**

AM2AC060W

Description:

AMBIENT G2 ACC FRONT END 600MM WH

**Product code:**

AM2ACECB

Description:

AMBIENT G2 ACC END COVER BK

**Product code:**

AM2ACECW

Description:

AMBIENT G2 ACC END COVER WH